

## Lina Bo Bardi House (Glass House)

**Location:** Morumbi, São Paulo, Brazil

**Date:** 1950-1951

**Architect:** Lina Bo Bardi

**Residents:** Lina Bo Bardi and her husband Pietro Bardi

### **Biography of Lina:**

- Born December 5, 1914 in Rome Italy
- Died March 20, 1992 in Sao Paul, Brazil
- Brazilian Modernist Architect
- Her office in Milan was destroyed in an aerial bombing
- She moved to Sao Paulo where she built her "Glass House" and the Sao Paulo Museum of Art
- Graduated from the University of Rome
- She also designed furniture

### **Glass House Information:**

- was built on the remnants of the original rain forest of mata Atlântica
- was once surrounded by exotic animals and vegetation
- Bo Bardi had the vegetation replanted after it was all cut down due to the new road
- resembled a tree house and inverted green house
- Built on the slope of a hill
- Le Corbusier was a reference and influence. Pietro was friends with him
- Walls were made of sheer glass
- built surrounding a tree. Front façade was elevated. Square spiral staircase underneath
- master bedrooms hidden in core of house (night spaces) while service spaces are clearly visible from exterior

-structure wise, Costa Meyer describes it as “paradigmatic Dom-INO house: spindly supports sandwiched daringly between two slabs of concrete. Thin, Corbusian pilotis raise the glass box elegantly aloft.”

-In my opinion, the use of glass windows and building it around a tree suggests the interconnectedness with nature and the environment.

-forest/vegetation serves as a mural, a work of art, that’s purpose is to please the eye

### Info Sources:

Harvard Design Magazine

Lino Bo Bardi’s Glass House, by Esther da Costa Meyer

[http://www.gsd.harvard.edu/research/publications/hdm/back/16decosta\\_meyer.html](http://www.gsd.harvard.edu/research/publications/hdm/back/16decosta_meyer.html)

Davies, Colin. *Key Houses of the Twentieth Century*. New York: W.W. Norton and Company, 2006. Print.



[http://1.bp.blogspot.com/\\_nCS9p3s026E/SWoD3N\\_lq4I/AAAAAAAAABel/EvWgCwgU2CA/s1600/lbovi\\_03.jpg](http://1.bp.blogspot.com/_nCS9p3s026E/SWoD3N_lq4I/AAAAAAAAABel/EvWgCwgU2CA/s1600/lbovi_03.jpg)(source)



[http://images.google.com/imgres?imgurl=http://www.tu-cottbus.de/theoriederarchitektur/Wolke/wolke\\_neu/inhalt/en/issue/issues/108/Lima/fig01.jpg&imgrefurl=http://www.tu-cottbus.de/theoriederarchitektur/Wolke/wolke\\_neu/inhalt/en/issue/issues/108/Lima/lima.php&usq=\\_\\_F8VYCgKD1R0v1bKj3mOJSLwIPw=&h=600&w=800&sz=245&hl=en&start=3&um=1&tbnid=HjhPol4ChR2LhM:&tbnh=107&tbnw=143&prev=/images%3Fq%3Dlina%2Bbo%2Bbardi%2Bglass%2Bhouse%26hl%3Den%26sa%3DN%26um%3D](http://images.google.com/imgres?imgurl=http://www.tu-cottbus.de/theoriederarchitektur/Wolke/wolke_neu/inhalt/en/issue/issues/108/Lima/fig01.jpg&imgrefurl=http://www.tu-cottbus.de/theoriederarchitektur/Wolke/wolke_neu/inhalt/en/issue/issues/108/Lima/lima.php&usq=__F8VYCgKD1R0v1bKj3mOJSLwIPw=&h=600&w=800&sz=245&hl=en&start=3&um=1&tbnid=HjhPol4ChR2LhM:&tbnh=107&tbnw=143&prev=/images%3Fq%3Dlina%2Bbo%2Bbardi%2Bglass%2Bhouse%26hl%3Den%26sa%3DN%26um%3D) (source)



[http://1.bp.blogspot.com/\\_\\_Rzf8WheUAU/SP0mTgInSpl/AAAAAAAAAFY/bK2flmYyFzk/s400/Bo+Bardi+3.jpg](http://1.bp.blogspot.com/__Rzf8WheUAU/SP0mTgInSpl/AAAAAAAAAFY/bK2flmYyFzk/s400/Bo+Bardi+3.jpg) (source)



4



5 and 6



7

Photos 4-7 are from this source

[http://images.google.com/imgres?imgurl=http://farm2.static.flickr.com/1079/1341270293\\_6cb8579470.jpg&imgrefurl=http://flickr.com/photos/47333265%40N00/1341270293&usq= da\\_9O\\_kSc2T4jTchkB1uuRkNKOc=&h=500&w=334&sz=124&hl=en&start=78&um=1&tbnid=rigjIPRYFjJucM:&tbnh=130&tbnw=87&prev=/images%3Fq%3Dlina%2Bbo%2Bbardi%2Bglass%2Bhouse%26ndsp%3D21%26hl%3Den%26sa%3DN%26start%3D63%26um%3D1](http://images.google.com/imgres?imgurl=http://farm2.static.flickr.com/1079/1341270293_6cb8579470.jpg&imgrefurl=http://flickr.com/photos/47333265%40N00/1341270293&usq= da_9O_kSc2T4jTchkB1uuRkNKOc=&h=500&w=334&sz=124&hl=en&start=78&um=1&tbnid=rigjIPRYFjJucM:&tbnh=130&tbnw=87&prev=/images%3Fq%3Dlina%2Bbo%2Bbardi%2Bglass%2Bhouse%26ndsp%3D21%26hl%3Den%26sa%3DN%26start%3D63%26um%3D1)

2 Ground Floor Plan

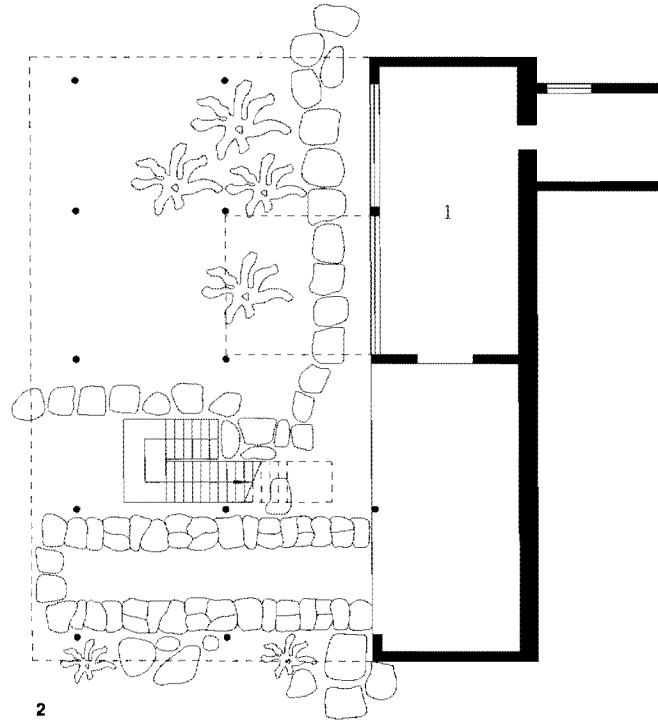
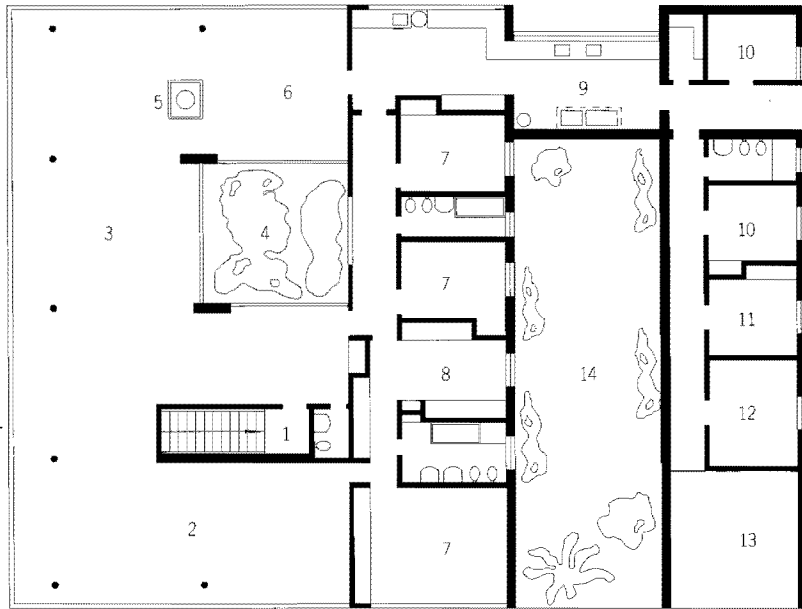
3 Section A-A

4 Elevation

- Entrance
- Library
- Living room
- Courtyard
- Fireplace
- Dining room
- Bedroom
- Clothes cupboard
- Kitchen
- Staff bedroom

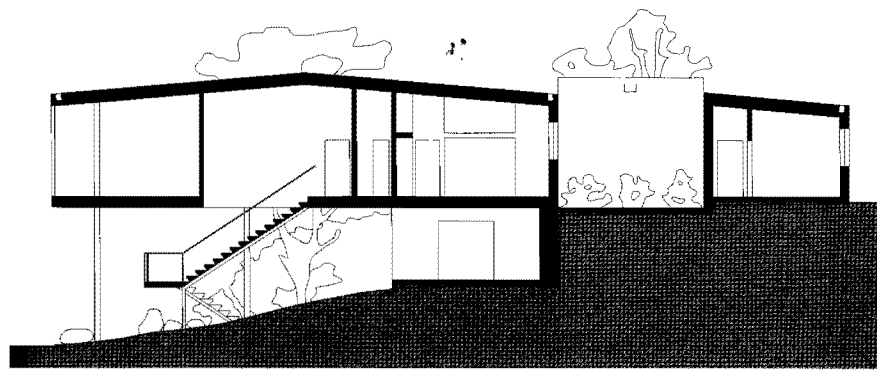
- 11 Staff living room
- 12 Wardrobe
- 13 Veranda
- 14 Patio

- 1 Storage

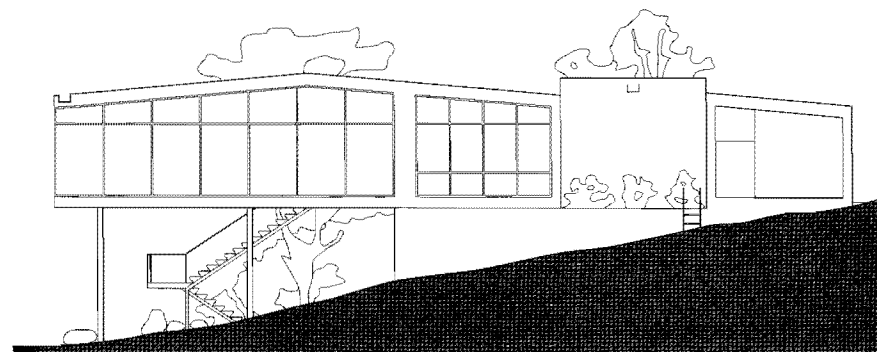


1

2



3



4

