

PLANTAS FOSILES DE LA CUENCA DE CUENCA, ECUADOR

1

Fotos de: R. J. Burnham. Producido por: R. J. Burnham, B. J. Miljour.

Agradecimientos a R. B. Foster, M. R. Metz, National Science Foundation & Escuela Politecnica National.

Numeros en letras negritos son numeros de morphotipos. Numeros de EPN son numeros de especimens.



C30 EPN 997



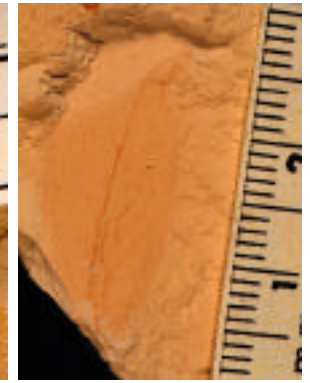
C52 EPN 967



C26 EPN 950



C53 EPN 785



C40 EPN 748



C51 EPN 070



C7 EPN 1052



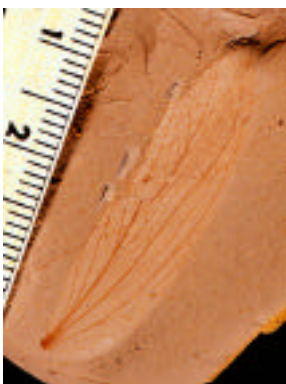
C29 EPN 762



C49 EPN 055



C50 EPN 896



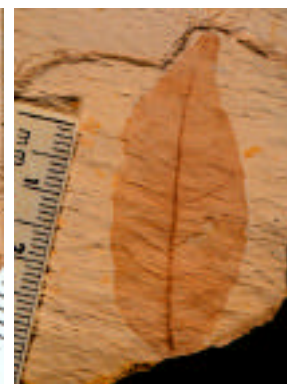
C9 EPN 122



C55 EPN 072



C24 EPN 109



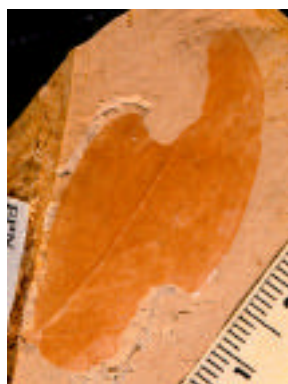
C34 EPN 726



C56 EPN 903



C54 EPN 1064



C27 EPN 948



C12 EPN 063



C47 EPN 1060



C37 EPN 110