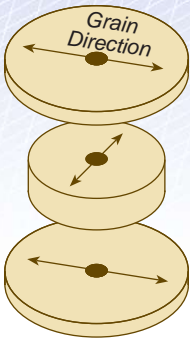


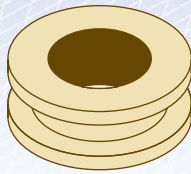
# Shop Notes

## Wooden Grommets

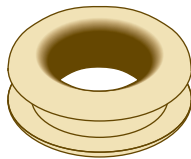
**A** dinghy I was building needed a simple means to attach a line to the bow for towing and mooring. I really didn't want a metal ring bolt sticking out of the transom, but simply drilling a hole through it wasn't the answer either. These wooden grommets fit the task perfectly



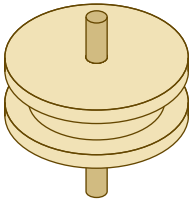
1) Cut three wood discs with a hole in the center. Hole saws are an excellent choice for this operation. The center disc should be thicker than material it will be placed through by slightly more than the thickness of the saw blade you'll be using the split ti later.



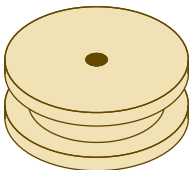
4) Bore center hole with hole saw or Forstner bit.



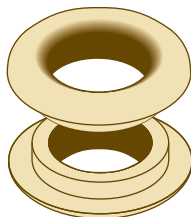
5) Shape the edges and sand the center bore to your satisfaction. On large grommets, a roundover bit and a router will do this job. More delicate grommets will require less aggressive methods.



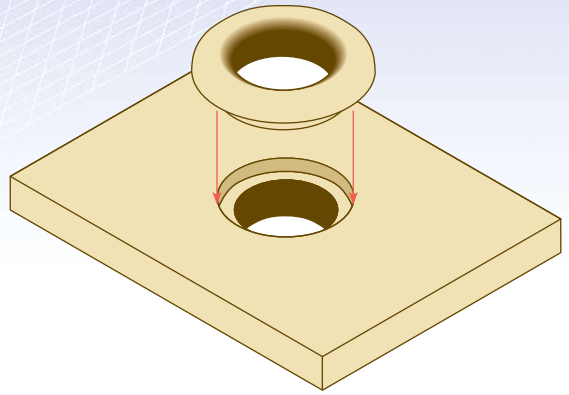
2) Glue together with a dowel for alignment.



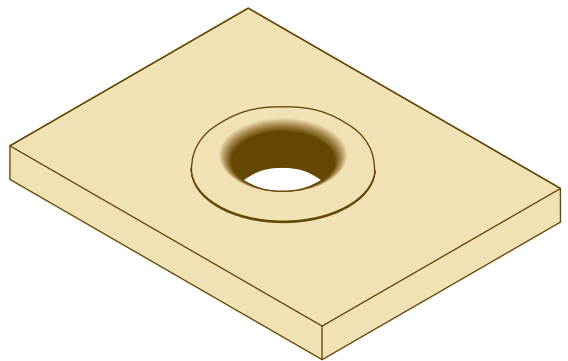
3) Trim dowel flush with the disc faces.



6) Split into two rings.



7) Bore opening for grommet. Dry fit, trimming and sanding center of grommet to fit.



8) Finished assembly.