

### Description:

This cabinet came into my family in the late 1960's. We acquired it at a farm auction in southern Ohio. It was probably made by a member of the family selling it. What I remember about the auction was the buggies parked under an enormous tree in the side yard of the farm. I don't know if the farm itself was Amish, but certainly many of the neighbors were. The cabinet is not particularly old, as it is held together with wire finish nails, and the drawer bottom is plywood. Nonetheless, it is a very traditionally built piece.

The cabinet face is dark cherry with a gloss varnish. Interior and hidden work is poplar or some other white wood. Except for the drawer and the doors all joints are butt joints secured with nails.

This cabinet is divided into two sections for easier transport. The joining of the upper and lower sections is concealed by the band of trim just above the drawer.

If I were going to reproduce the cabinet, I'd choose a hardwood plywood for the shelves and back, and face it with solid lumber.

A word about the size of this piece: of the six houses it's been in since my family acquired it, only one has had more than one place it would fit. The only place it fits in my present home covers a small closet door. Also, be aware that the finished piece is heavy and difficult to move. The upper case in particular requires care in handling.

## Corner Cabinet

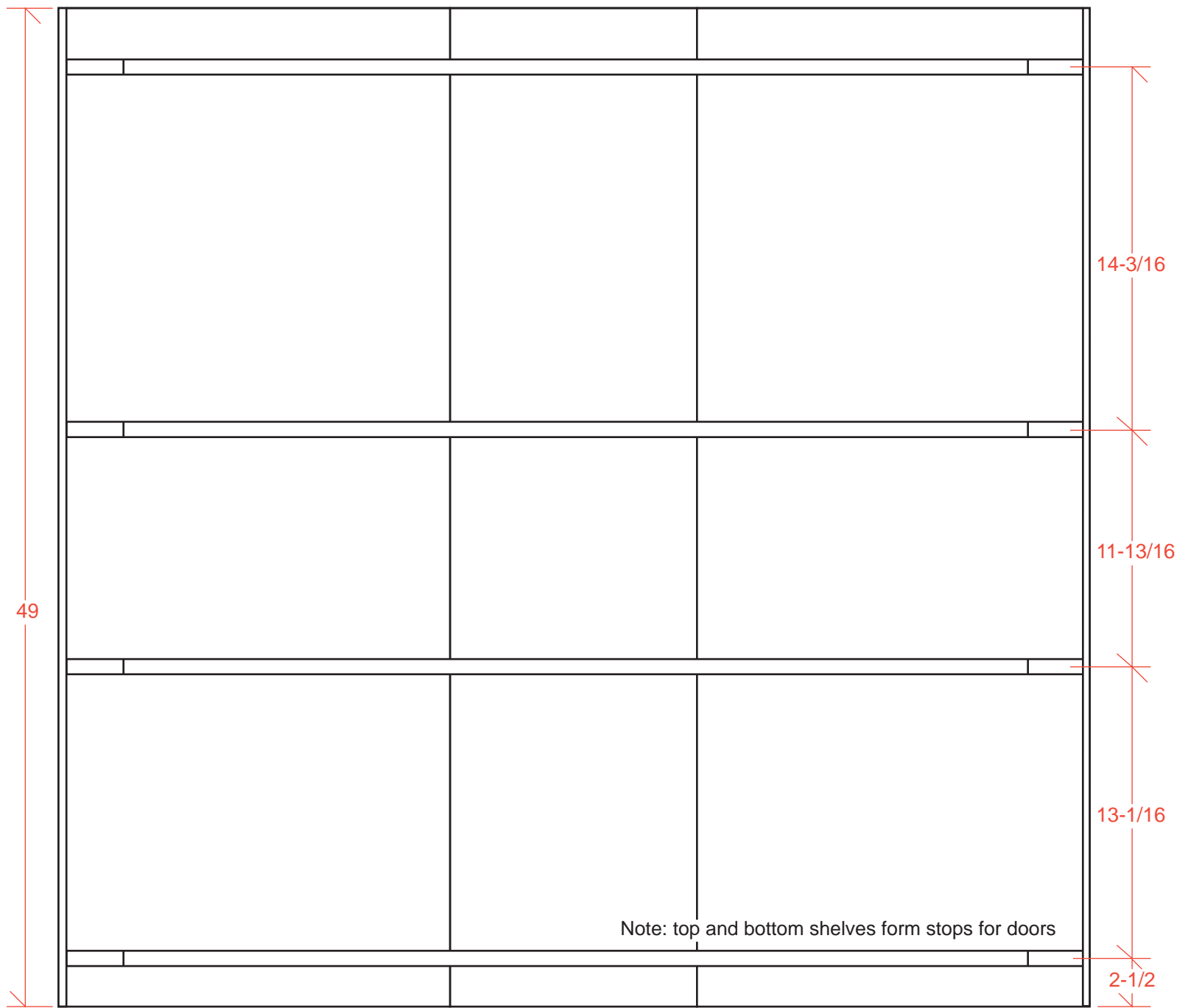
Copyright 2002, Dale Austin

501 West Chicago Boulevard, Tecumseh MI 49286

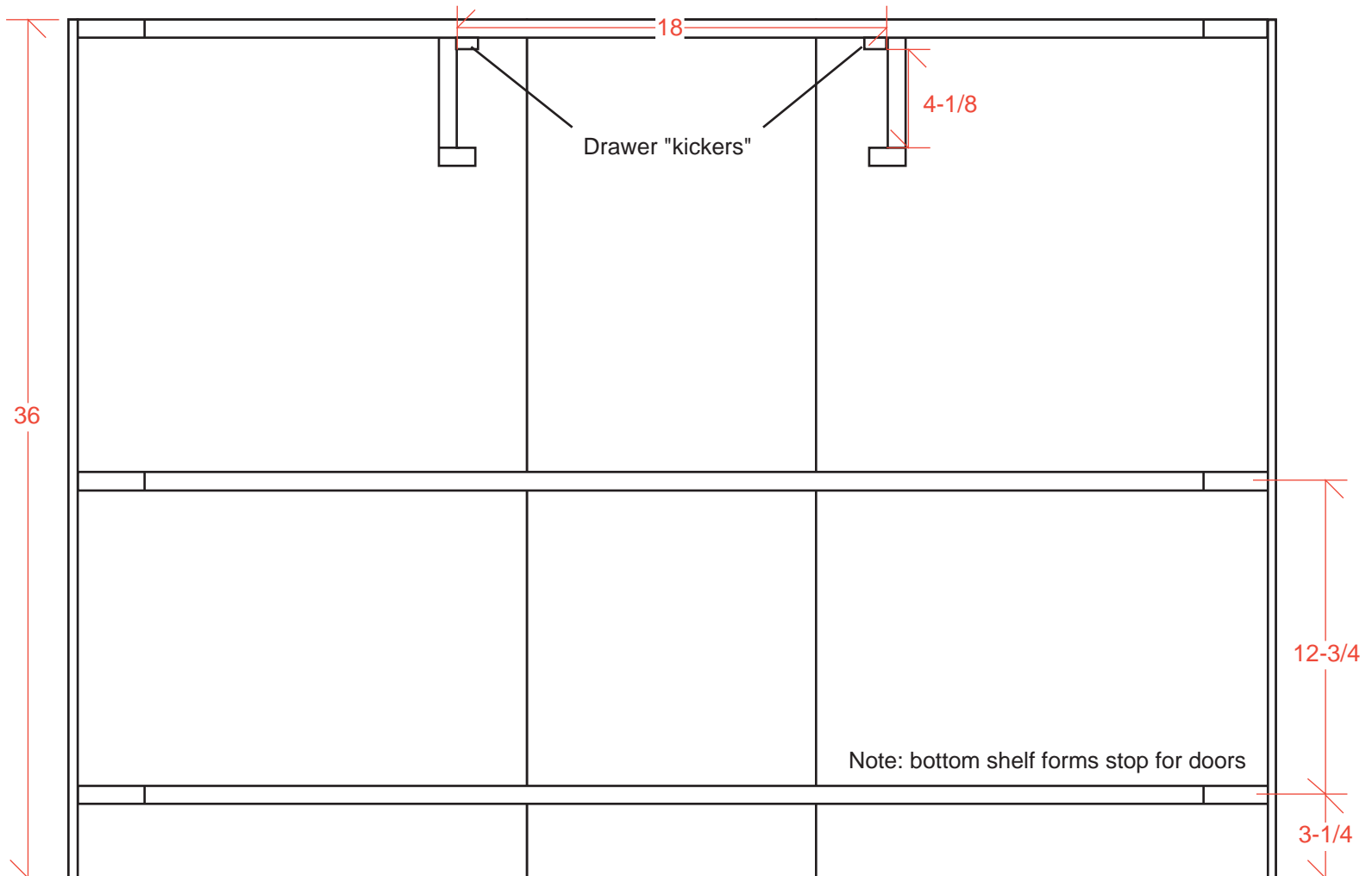
### Disclaimer:

These plans are provided without warranty of any kind. It is assumed that the user is a sufficiently experienced woodworker to verify dimensions and construction details. If this does not describe you, don't try it. Use proper safety precautions when using any tool.





Upper Case



Lower Case

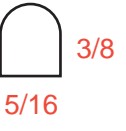
All dimensions in inches

# Corner Cabinet

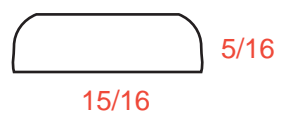
Copyright 2002, Dale Austin  
501 West Chicago Boulevard, Tecumseh MI 49286

Disclaimer:  
These plans are provided without warranty of any kind. It is assumed that the user is a sufficiently experienced woodworker to verify dimensions and construction details. If this does not describe you, don't try it. Use proper safety precautions when using any tool.

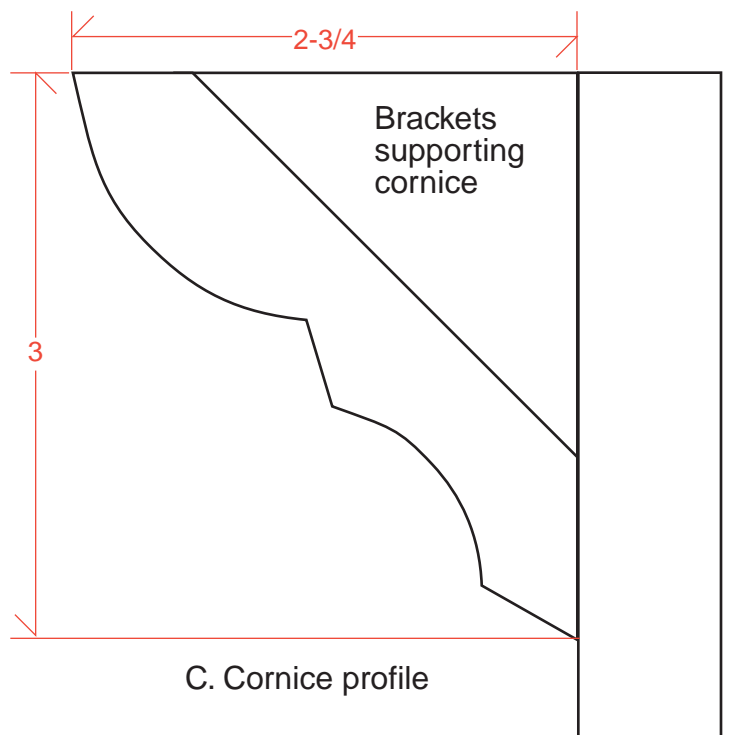
A.



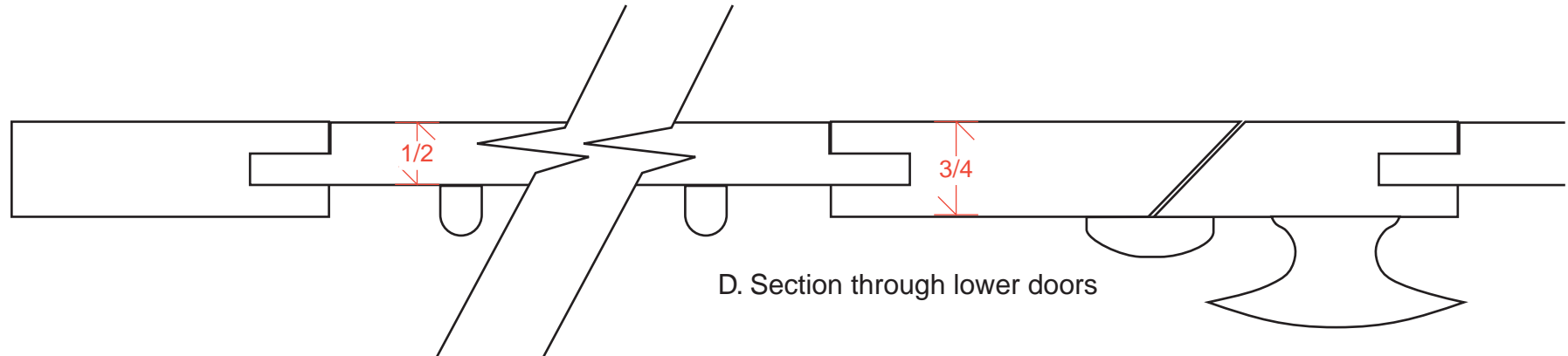
B.



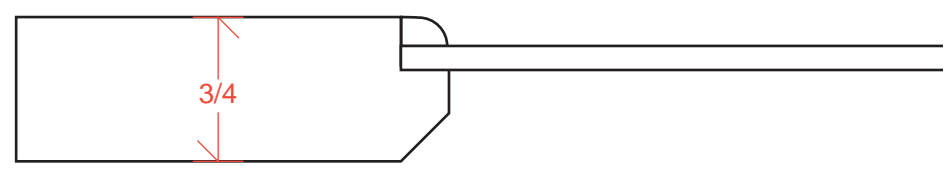
Moulding profiles



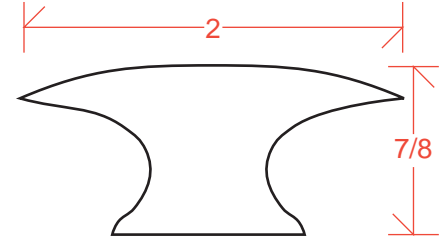
C. Cornice profile



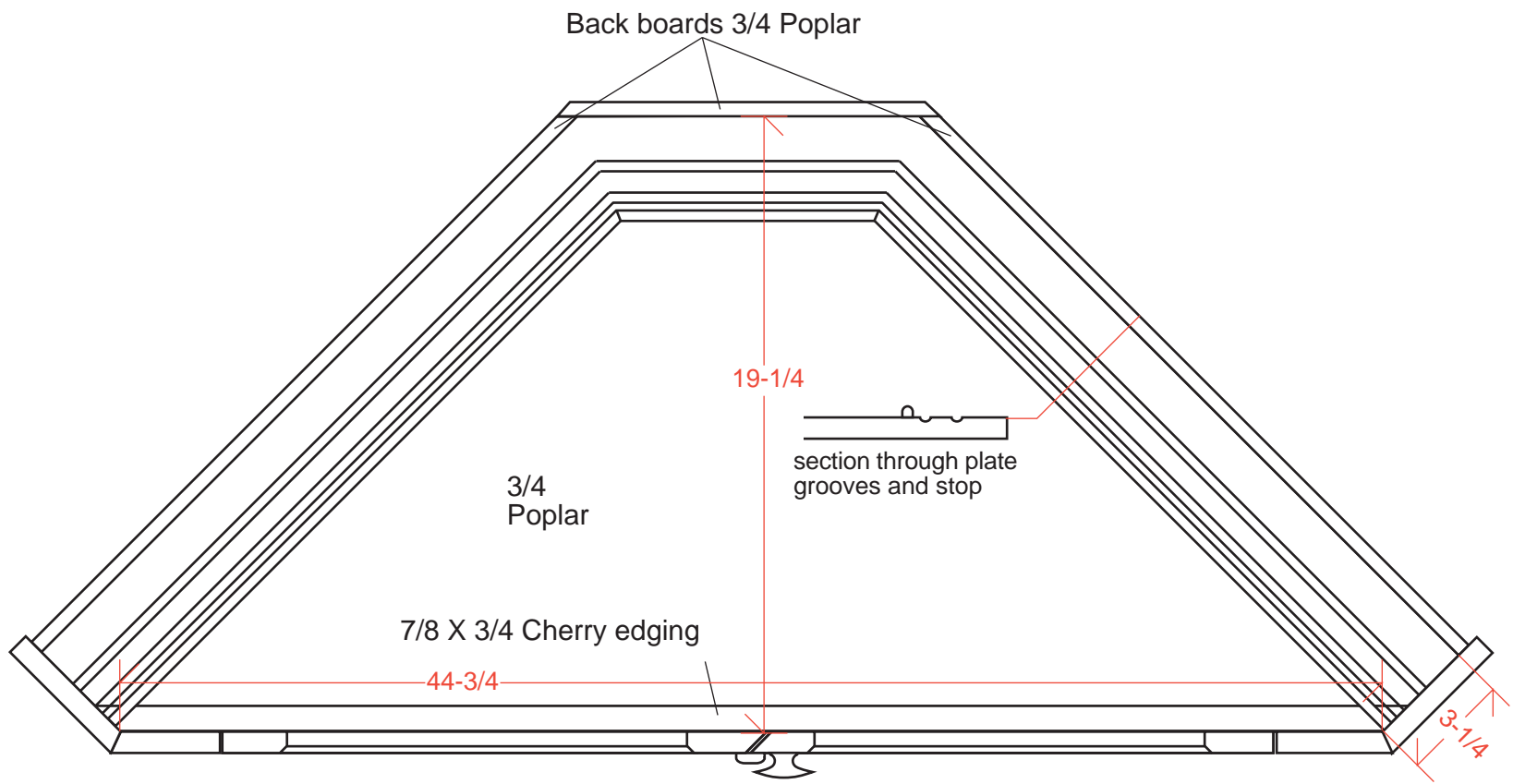
D. Section through lower doors



E. Section through upper door showing glass mounting



F. Knobs



G. Section through upper case

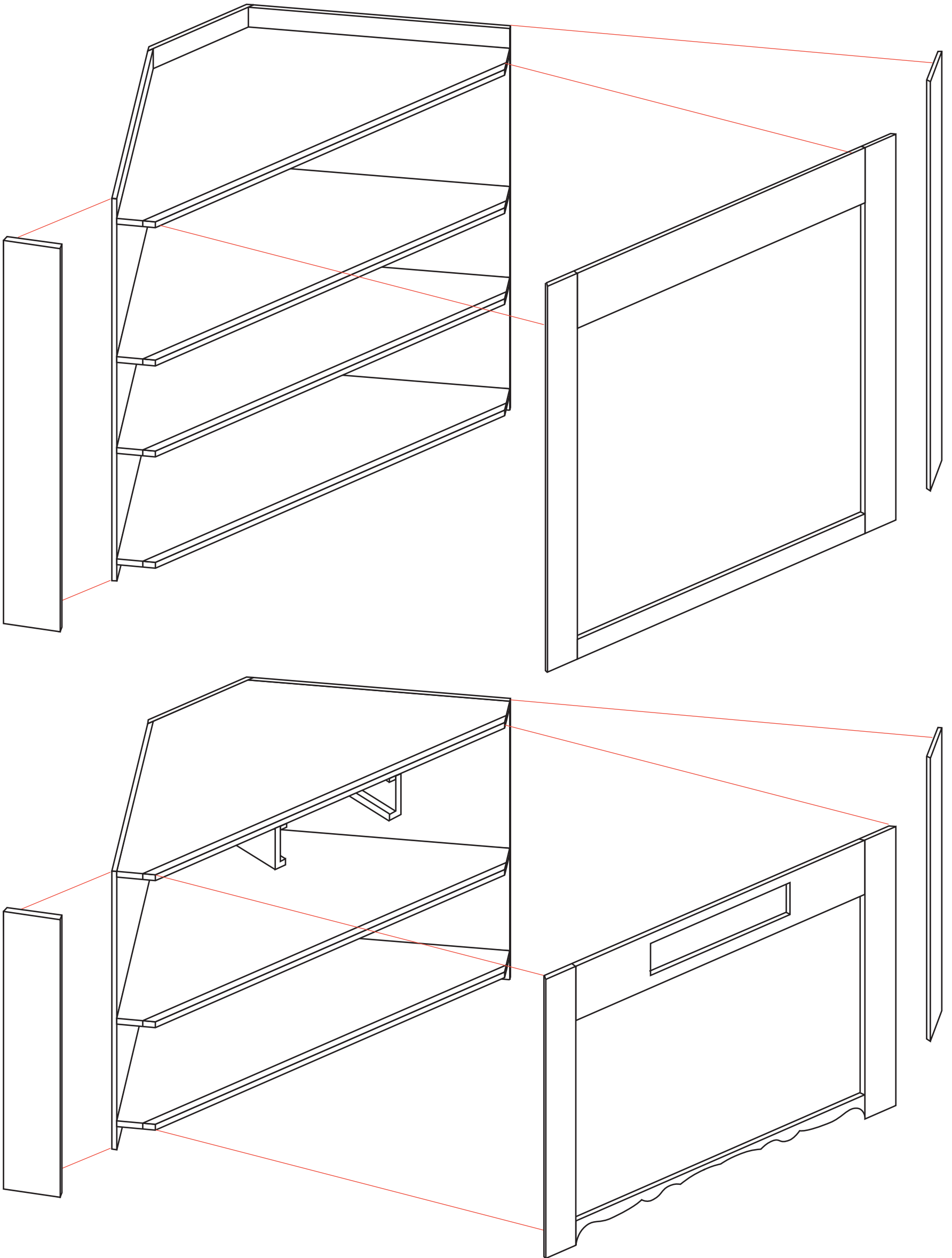
# Corner Cabinet

Copyright 2002, Dale Austin  
501 West Chicago Boulevard, Tecumseh MI 49286

Disclaimer:  
These plans are provided without warranty of any kind. It is assumed that the user is a sufficiently experienced woodworker to verify dimensions and construction details. If this does not describe you, don't try it. Use proper safety precautions when using any tool.

**Basic assembly:**

The carcass consists of two boxes constructed from cherry-faced poplar shelves and poplar back and side boards. The frame and trim detail were applied afterwards.



# Corner Cabinet

Copyright 2002, Dale Austin

501 West Chicago Boulevard, Tecumseh MI 49286

**Disclaimer:**

These plans are provided without warranty of any kind. It is assumed that the user is a sufficiently experienced woodworker to verify dimensions and construction details. If this does not describe you, don't try it. Use proper safety precautions when using any tool.