

Modular: constructed with standardized units or dimensions allowing flexibility and variety in use. Architecture that leverages the latest standards and uses modular components to enable rapid development, portability, extensibility, and quick integration with existing systems. Modular construction is an advanced form of facility construction in which a building is built in three-dimensional sections (or modules) in an enclosed factory environment.¹



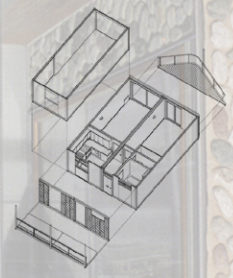
Ecoville- OMD



Portable House- OMD



Sustainable Portable Classroom- OMD



Metro Stops: Despang Architekten

Computer technology now enables off-site fabricators to produce higher-quality housing than on-site construction teams can. Also, by marrying CAD directly with production machinery, digital directives coming straight from an architect's computer screen are removing the middleman on the way to the factory. So prefab, its boosters contend, is poised to irrevocably alter the traditional tripartite balance of architect, contractor, and client--giving architects, at long last, the upper hand.²

A module is a self-contained component of a system, which has a well-defined interface to the other components; something is modular if it is constructed so as to facilitate easy assembly, flexible arrangement, and/or repair of the components.³



Rotation Pneu Shelter- Dominik Baumuller



Dwell Home- Resolution: 4 Architecture



Bibliography, links and additional information go to: <http://www-personal.umich.edu/~cpi/cke/>