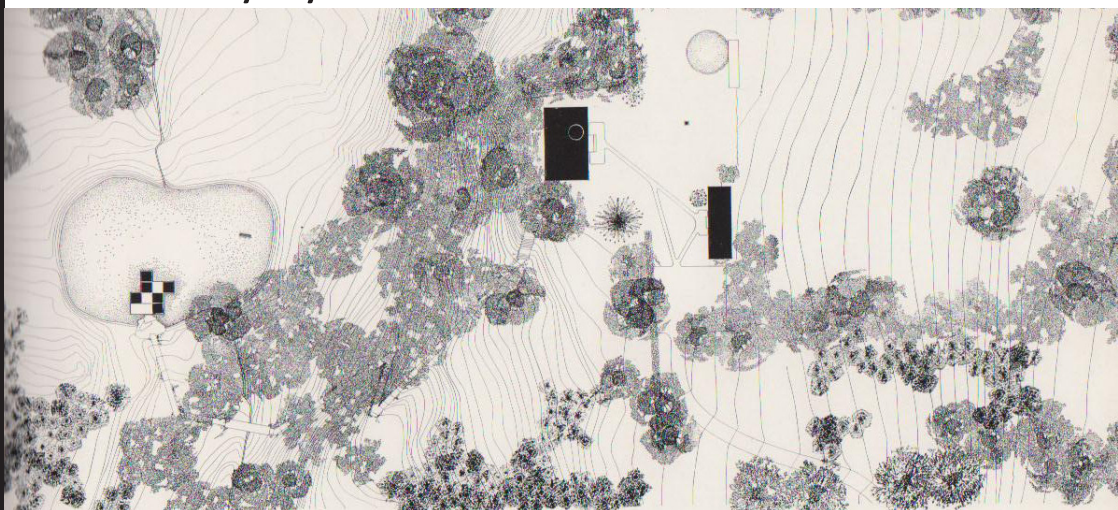


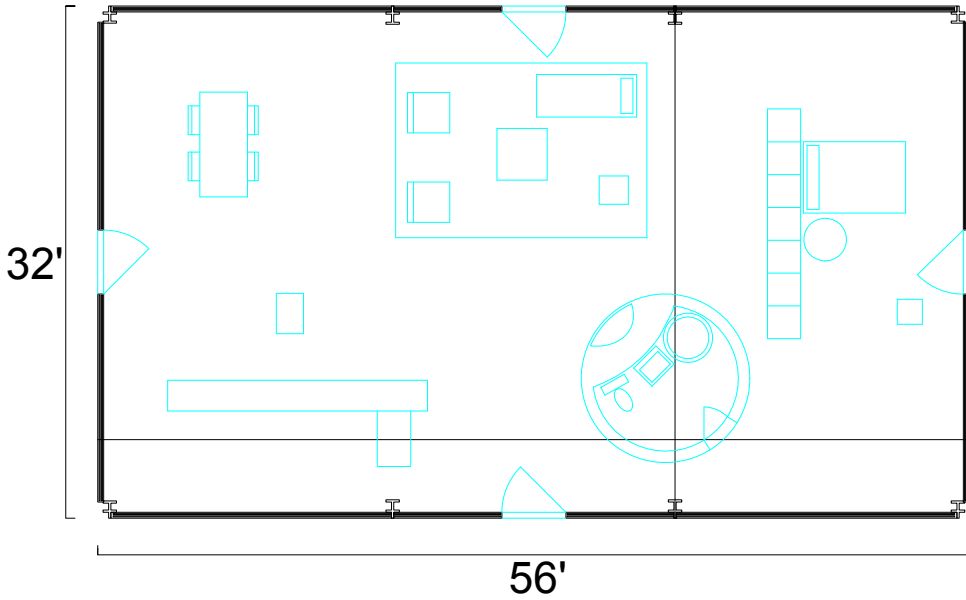
The Glass House
Architect: Philip Johnson
Architecture 211

Case Study by: John Ficara



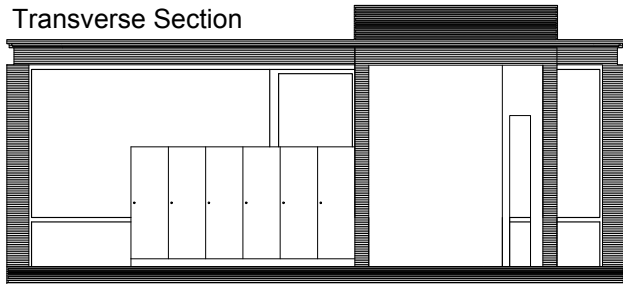
Ground Plans/Section Cuts

Ground Plan

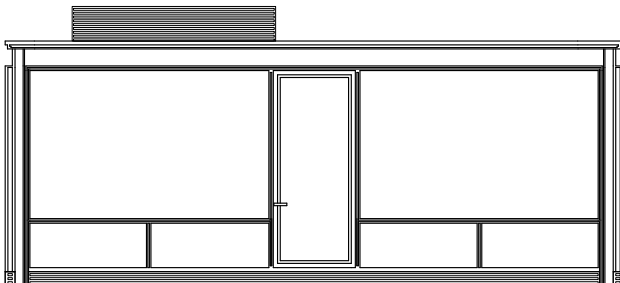


This building is located in New Canaan, Connecticut. The structure of the piece is serene and basic, actively engaging the landscape. Essentially, The Glass House is a rectangular prism featuring strong symmetry.

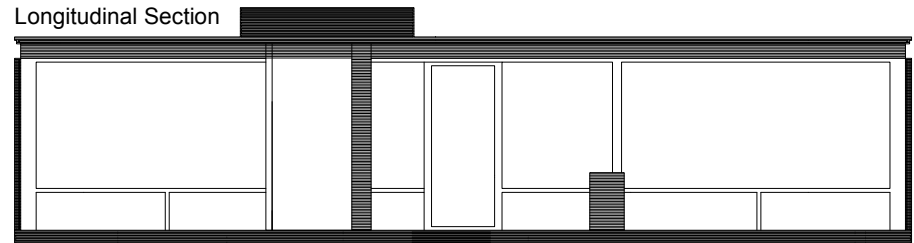
Transverse Section



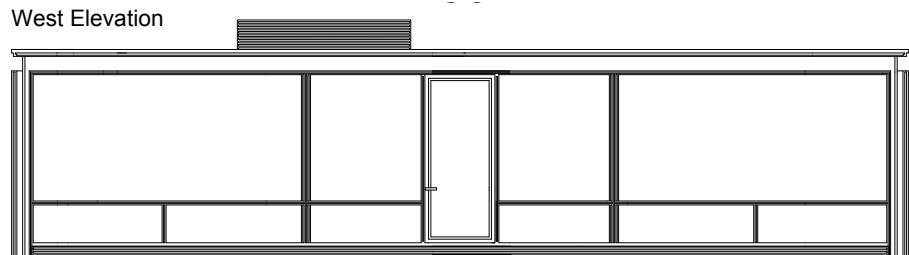
North Elevation



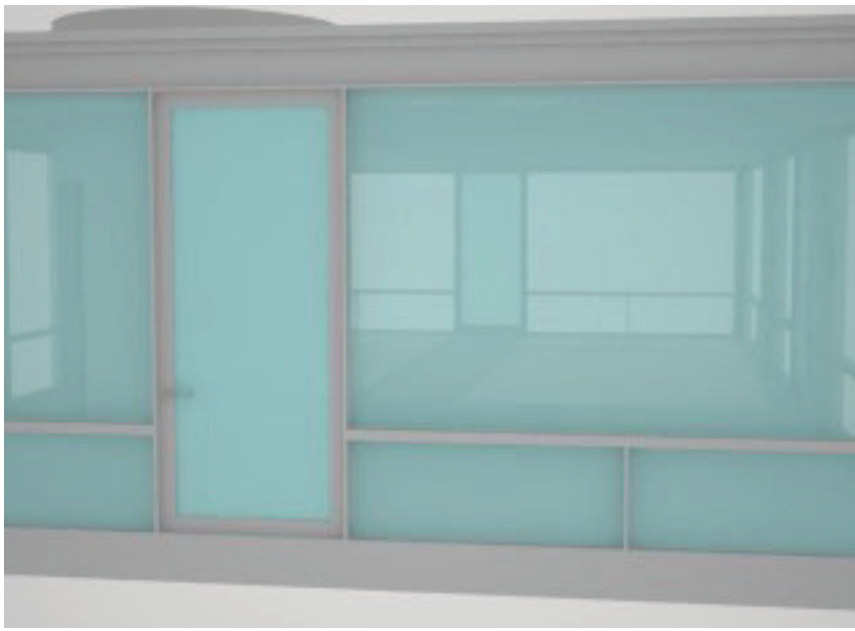
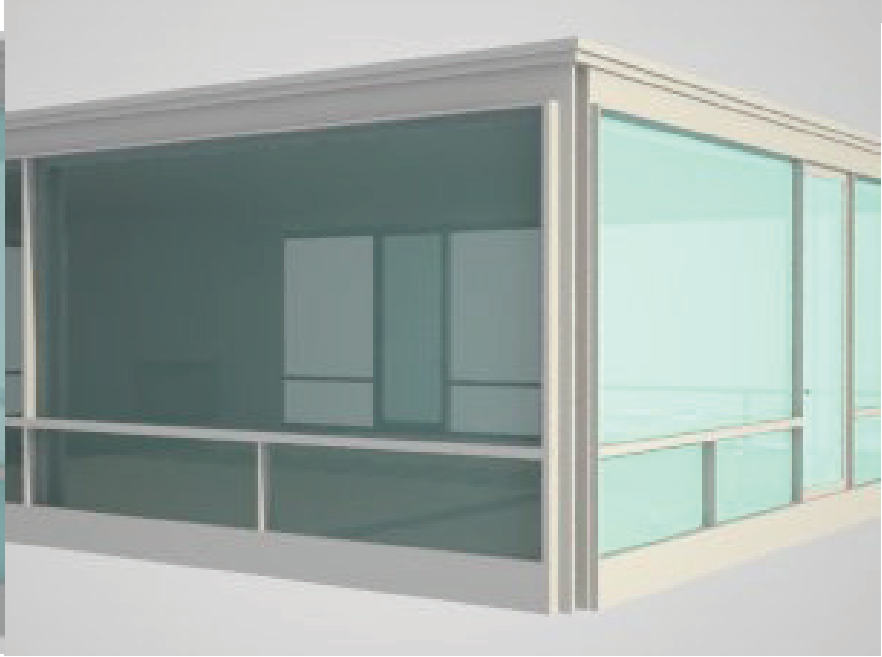
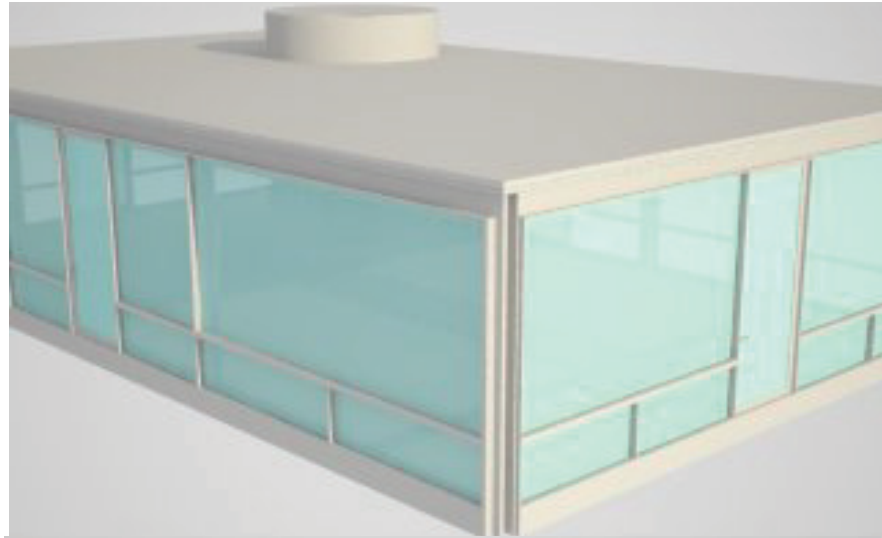
Longitudinal Section

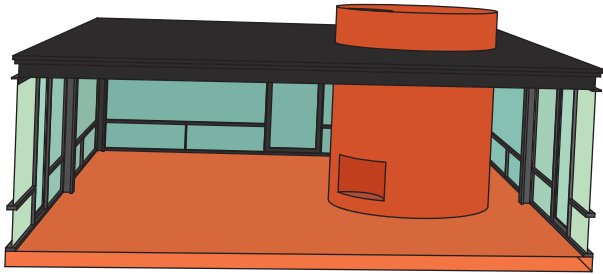


West Elevation

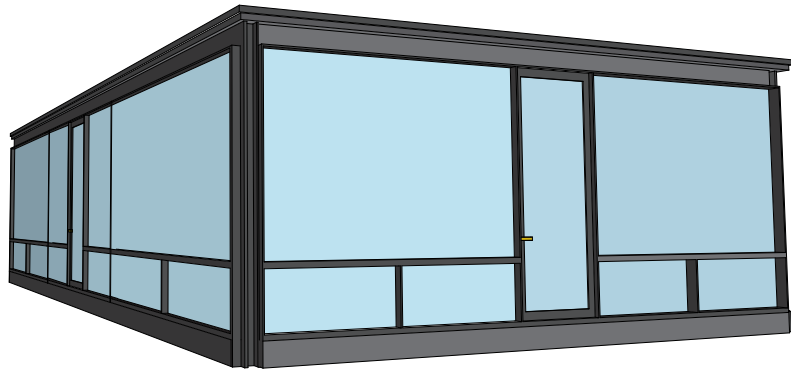
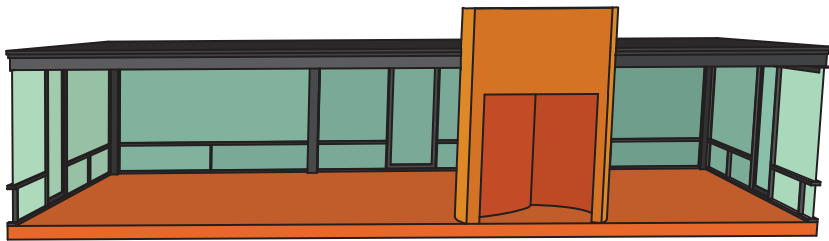


The V-Ray renders use the sunlight in a play against the materiality of the structure, showing the transparent windows that encompass a high majority of the building.





The illustrator images on the top/middle left show the sparse interior of the house. There is minimal structure on the interior, with the majority of the walls being non-load bearing partitions.



2D Illustrator Drawings/Hybrid Expression