

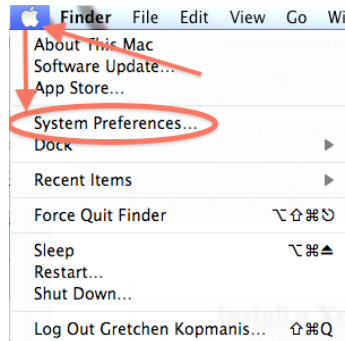
# Install a Xerox Printer in OS 10.6

The intended audience for this document is Psychology end-users.

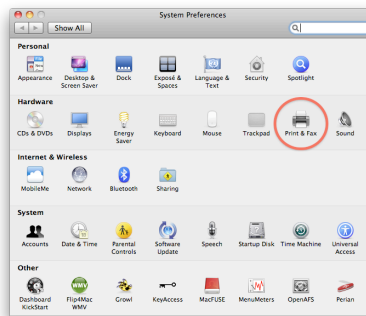
- Download the Xerox 7665 (Rev. 2) printer driver for the OS. This will download a .dmg file that will automatically launch the installer for you.

<http://www.support.xerox.com/support/workcentre-7655-7665-7675/file-download/enus.html?operatingSystem=macosx&fileLanguage=en&contentId=114401&from=downloads&viewArchived=false>

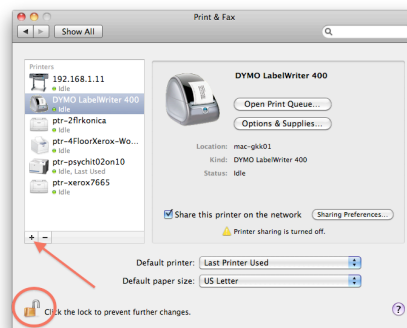
- Under the APPLE icon in the upper left corner of your computer screen
- Select SYSTEM PREFERENCES



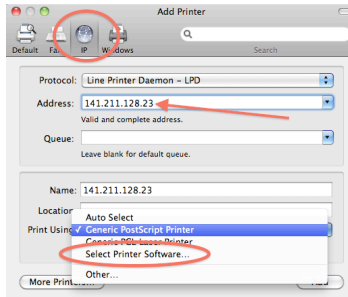
- Open the PRINTER & FAX system preferences pane



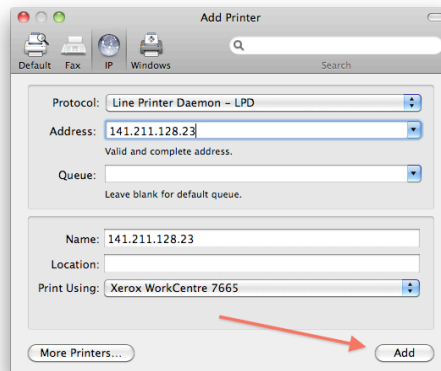
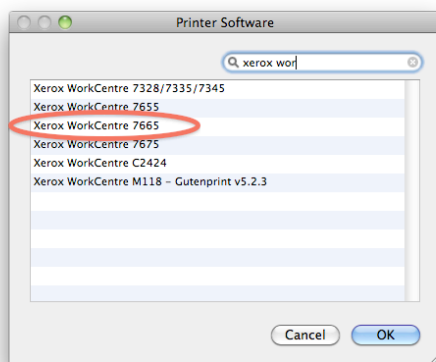
- Click the LOCK in the lower left corner to unlock it (if it is closed) and enter your password
- Click the + under the printer list to ADD a new printer



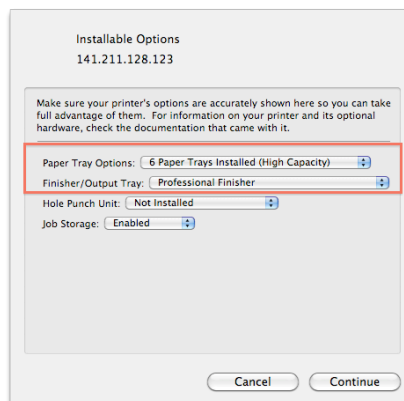
- In the "Add Printer" window, select the IP Tab
- In the ADDRESS field, type the IP address of the Psych Xerox, **141.211.128.123**
- In the PRINT USING pull-down section, choose "SELECT PRINTER SOFTWARE"



- In the PRINTER SOFTWARE window, find and select XEROX WORKCENTRE 7665
- Click OK
- In the ADD PRINTER window, click ADD



- In the INSTALLABLE OPTIONS window
- Set the PAPER TRAY OPTIONS, to "6 Paper Trays Installed (High Capacity)"
- Set the FINISHER/OUTPUT TRAY to "Professional Finisher"



- Click CONTINUE to finish