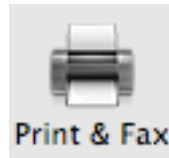


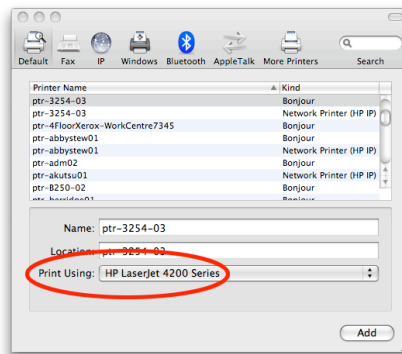
Install a Printer in OS X.5

The intended audience for this document is department system administrators (DSA's).

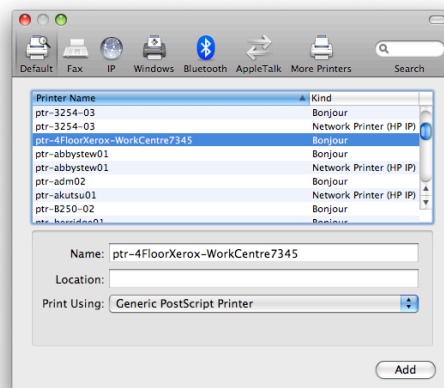
- Open System Preferences
- Under Hardware, double-click on PRINT & FAX
- Click on the + button to add a new printer



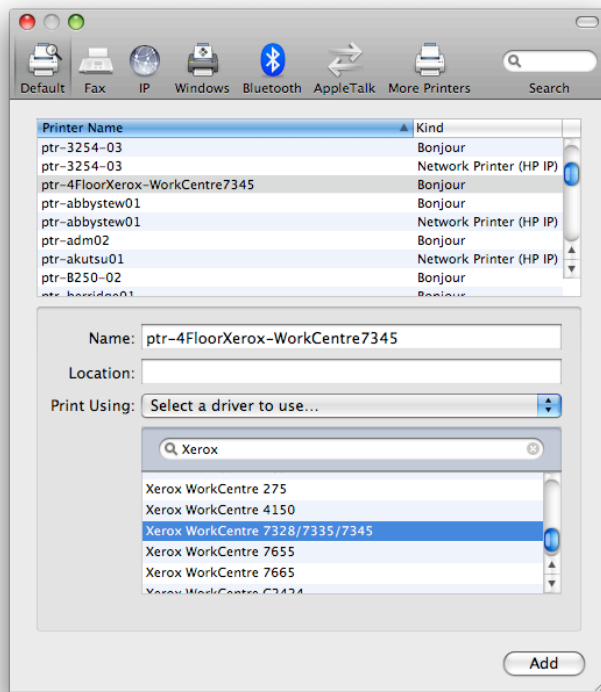
- Find your printer under the DEFAULT tab first, if you can (easier)
- Click once on it to select it
- If the printer's driver can be found, it will display which driver it found



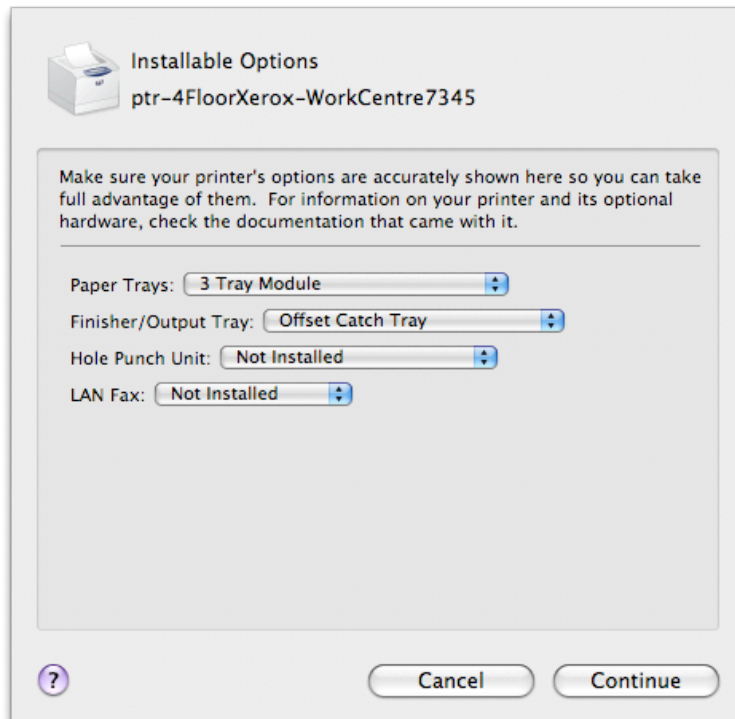
- If it cannot find a printer driver, you will have to install it manually from the print vendor's website
- If you already have the printer driver loaded, you may need to manually select it



- Under the PRINT USING pull-down menu, select "Select a driver to use..."
- In the search window, type the manufacture of your printer to help narrow down your choices
- Find your exact printer type, and click ADD



- You may be given the option of identifying enhanced characteristics of your printer



- Make the appropriate changes and click CONTINUE
- Your printer will now show up as one of your printing resource options in the Print & Fax system preference pane