

Install a Printer in OS X

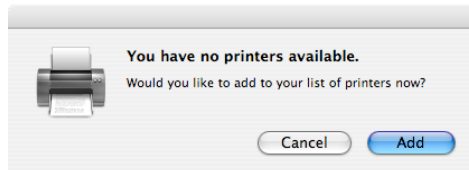
The intended audience for this document is department system administrators (DSA's).

- Locate the Print Setup Utility on your hard drive in your Applications -> Utilities folder

- Double-click on the PRINTER SETUP UTILITY to launch it

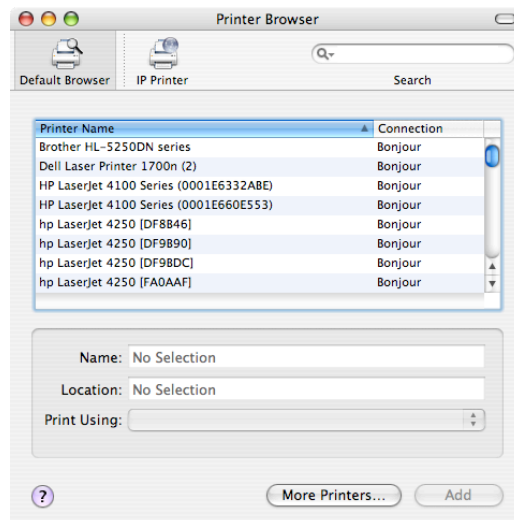


- If you do not have a printer configured already, you will be prompted to add a printer through this window



NOTE: *If you have a printer already defined, and are still unable to print, you may have to delete the printer and recreate it in this utility.*

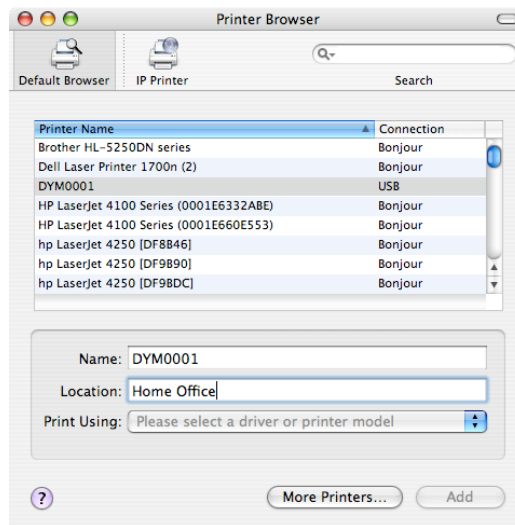
- Click ADD, and a PRINTER BROWSER window will appear



Add a USB Printer

If you have a USB Printer already connected to your computer, you should see it appear in the window above. The printer name will appear in the Printer Browser window and the connection type will say USB. To add a USB printer...

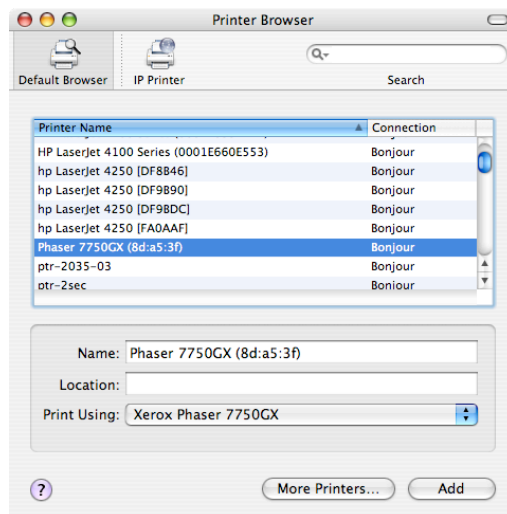
- Click on the printer in the list
- Click ADD



Add a Bonjour Printer

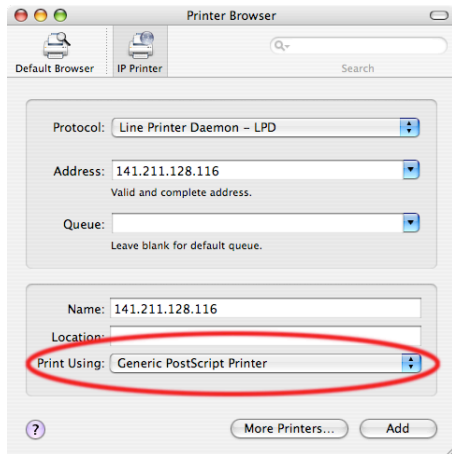
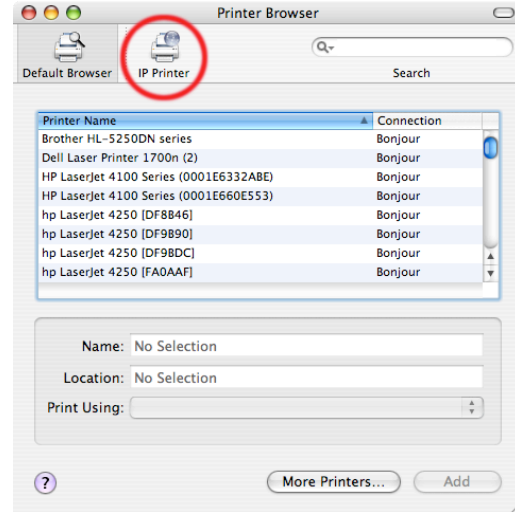
Some network printers run a protocol called BONJOUR. If your IP printer has Bonjour, you may see the printer name appear in the Printer Browser list. To add a Bonjour printer...

- Click on the printer in the list
- Click ADD



Add an IP Printer

- Click on IP PRINTER in the Printer Browser
- Enter the IP address of your printer in the ADDRESS field



If the Printer Setup Utility can resolve the type of printer you have identified, it will. If the PRINT USING field says "Generic PostScript Printer", then your printer has not been properly identified.

- In the PRINT USING pull-down list, select the printer manufacturer.
- In the MODEL list, select your particular printer's description.

