

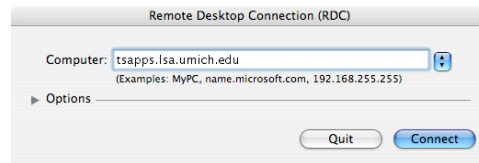
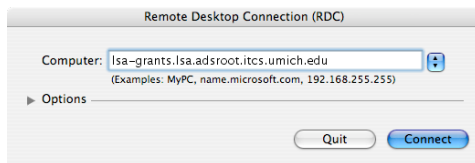
Running MS-Remote Desktop Connection

The intended audience for this document is end-users.

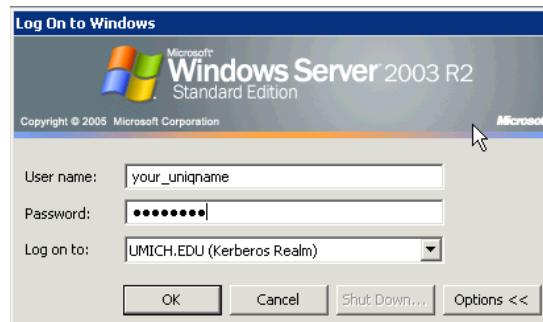
With Remote Desktop Connection Client for Mac, you can connect from your Macintosh computer to a Windows-based computer and work with programs and files on that computer.



- Open the /Applications/Microsoft Office 2004/Additional Tools/Remote Desktop Connection/Remote Desktop Connection folder
- Double-click on the application REMOTE DESKTOP CONNECTION to launch
- Enter the name of the terminal server you are trying to connect to in the COMPUTER field.
To access the GRANTS server, type... *lsa-grants.lsa.adsroot.itcs.umich.edu*
To access the SPSS server (for INTEL Macs), type ... *tsapps.lsa.umich.edu*
- Click CONNECT



- Log into the Windows computer with your username and Kerberos password



- If you see this error, you must email psychit@umich.edu or call 763-0193 during business hours to request access.

