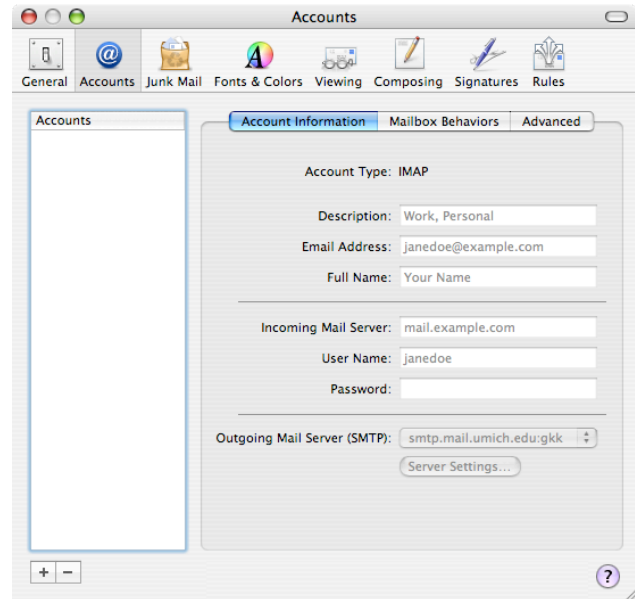


Configuring the OS X Mail Application for ITCS Exchange

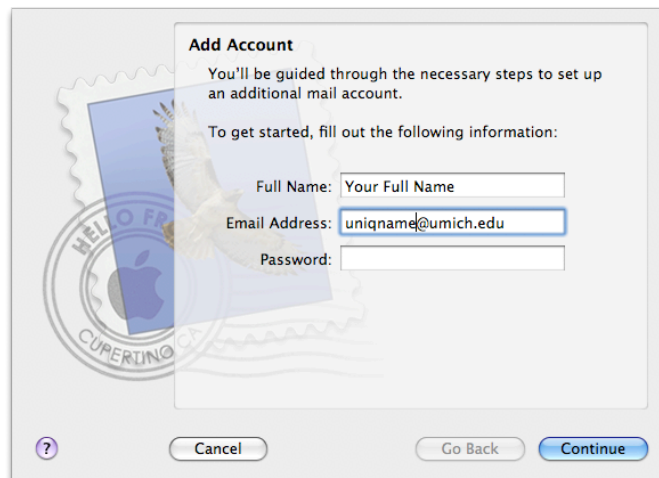
Now with iPhone info for easy syncing

The intended audience for this document is department system administrators (DSA's) and end-users.
If you are using exchange and an iPhone, follow the alternate directions in GREEN.

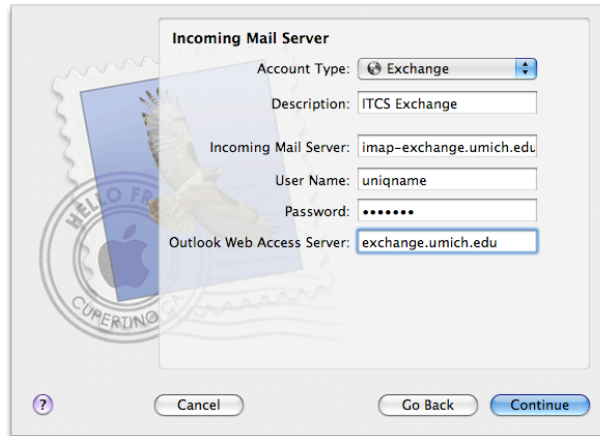
1. Launch the mail client (even if you already created an account that does not work, you can always delete that one later by selecting it and clicking the (-) button in the lower left corner)
2. Under MAIL menu, select PREFERENCES
3. To add an account, click (+) button in the lower left corner and a "Create Mail Account Assistant" will launch to help you.



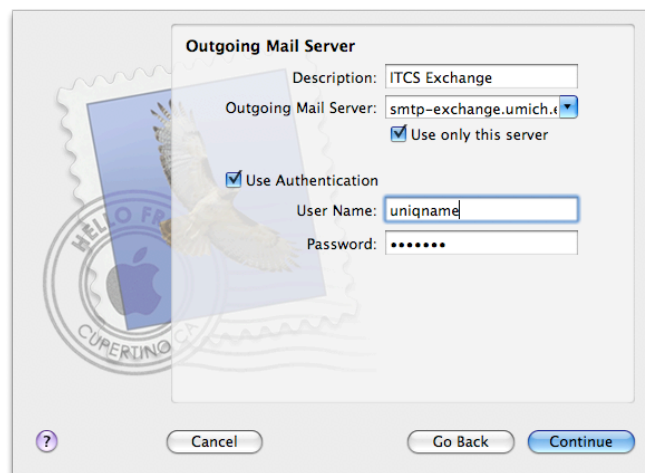
4. In the ADD ACCOUNT window...
 - In the **Full Name** field, type *Your Full Name*
 - In the **Email Address** field, type *Your Uniqname@umich.edu*
 - In the **Password** field, type your password
 - Click Continue



5. In the INCOMING MAIL SERVER window...
 - In the **Account Type** field, type is *EXCHANGE* (for iPhone, use *IMAP*)
 - In the **Account Description** field, type *ITCS Exchange*
 - In the **Incoming Mail Server** field, type *exchange.umich.edu*
(for iPhone use *imap-exchange.umich.edu*)
 - In the **User Name** field, type *Your_Uniqname* (for iPhone, use *umroot\uniquname*)
 - In the **Password** field, type your *ITCS Kerberos password*
 - In the **Outlook Web Access Server** field, type *exchange.umich.edu*
 - Click **Continue**



6. In the OUTGOING MAIL SERVER window...
 - In the **Description** field, type *ITCS Exchange*
 - In the **Outgoing Mail Server** field, type *exchange.umich.edu*
(for iPhone use *smtp-exchange.umich.edu*)
 - Put a checkmark in the "Use only this server" box
 - Put a checkmark in the "Authentication" box
 - In the **User Name** field, type *Your_Uniqname*
 - In the **Password** field, type your *ITCS Kerberos password*
 - Click **Continue**



7. In the ACCOUNT SUMMARY window...
 - Click **Create**