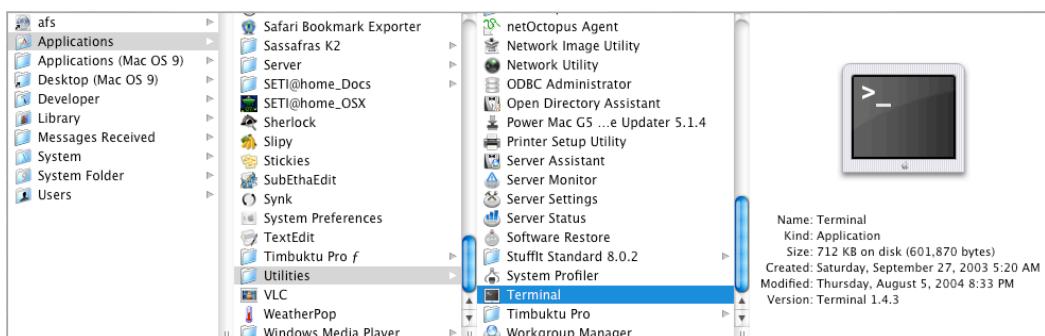


Use **TERMINAL** to access ITCS Pine email

The intended audience for this document is end users

- Open your Macintosh HD/Applications/Utilities folder



- Launch the application **TERMINAL**
- At the \$ prompt, type "ssh <username>@login.itd.umich.edu" (no quotes)

NOTE: The first time you do this on any computer, you will see the message:

```
The authenticity of host login.itd.umich.edu (n.n.n.n)' can't be established.  
RSA key fingerprint is c1:b4:nn:ed:46:nn:09:e7:8a:2d:nn:a0:xx:2c:fd:81.  
Are you sure you want to continue connecting (yes/no)?
```

- IF you get this message, type 'yes' (no quotes)
- You will see the welcome screen

```
Welcome to the ITCS Login Service!
```

```
Last login: Mon Aug 23 11:03:04 2004 on timepilot.gpcc.itd.umich.edu  
from your_computer.umich.edu (pts/64)
```

```
TERM = (xterm-color)
```

- For the TERM, type 'ansi' (no quotes)

NOTE: If you do NOT want to be asked for the TERM type each time you log into ITCS, you can reset the TERMINAL->PREFERENCES to vt100

