

Connecting to a IFS or LSA Server Through Your Internet Service Provider

The intended audience for this document is end-users.

- Under your hard drive, find the application called FUGU
MacintoshHD -> Applications -> Fugu
- Launch FUGU



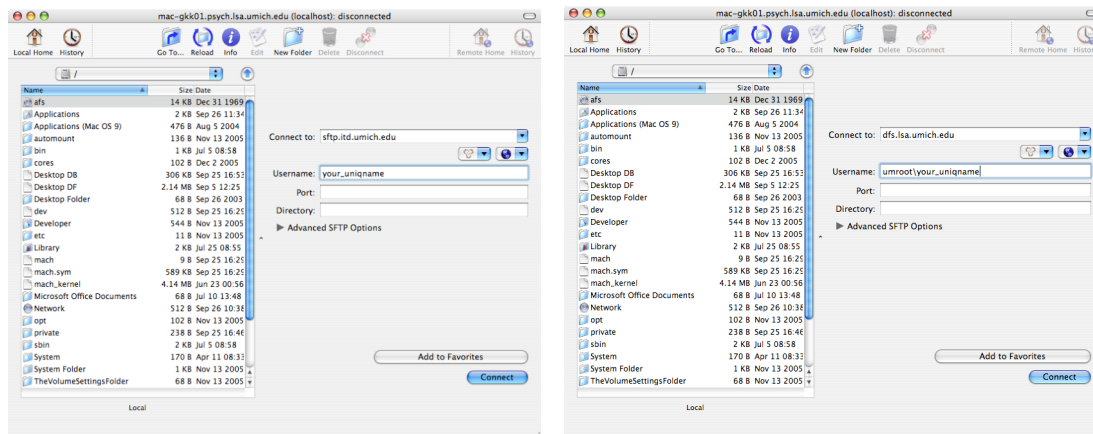
To Access the IFS Servers

- In the CONNECT TO field, type sftp.itd.umich.edu
- In the USERNAME field, type your unickname

To Access the LSA Windows Servers

- In the CONNECT TO field, type dfs.lsa.umich.edu
- In the USERNAME field, type UMROOT\unickname

Tip: *If you connect often, you can click the "Add to Favorites" button, which will cut down typing time when you want to connect to this server again.*



- Click the CONNECT button
- Log in using your Kerberos password
- From this point, you can maneuver through the file servers to connect to the space you are looking for.