

# Kline Walnut-Grove Farm

13. Kline-Walnut Grove Farm,  
5968 Eight Mile Road



Walnut  
Grove  
Farmhouse

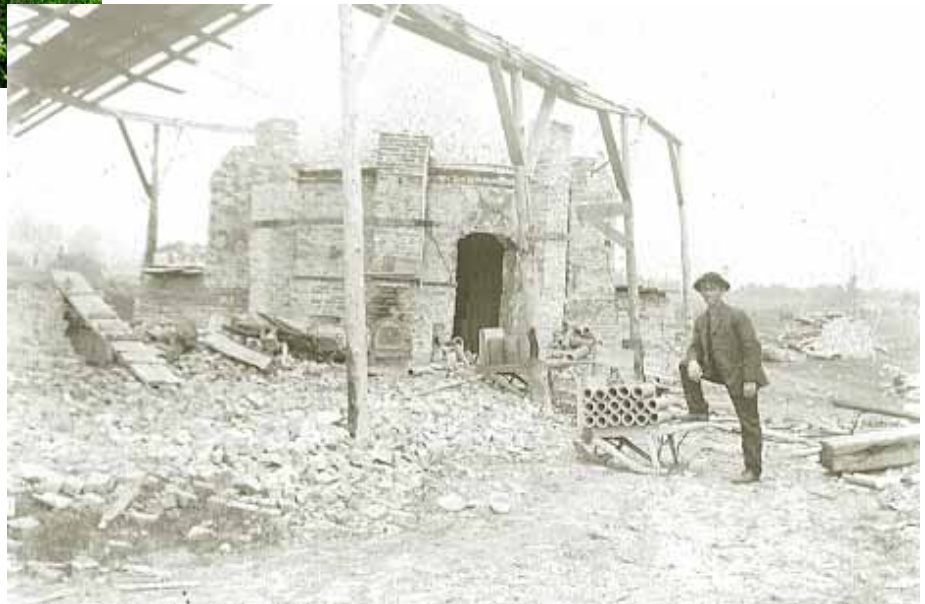
Milkhouse  
with  
Centennial  
Farm Sign



In 1861, Henry August Kline purchased the land for what later became Walnut Grove Farm. Henry's son, William Henry Kline, built this brick house in 1907.



Bay Window of  
Walnut Grove  
Farmhouse



Farm Brickyard



Steam-Powered  
Equipment at  
Work on the Farm

## Everyone Helped on the Farm



The dwelling was the first to have electric lights in the area, with the generator being run by a waterwheel on the land across Eight Mile Road (Onkama did not have public electricity until 1927). To cool dairy products, artesian well water ran through the milkhouse, which like the early house is built of brick made in William Henry Kline's brickyard that was on the backlot of the Farm. The farmhouse has been renovated by John H. (William Henry's grandson) and Virginia Kline.

The Kline Walnut Grove Farm has received the Michigan Centennial Farm designation.