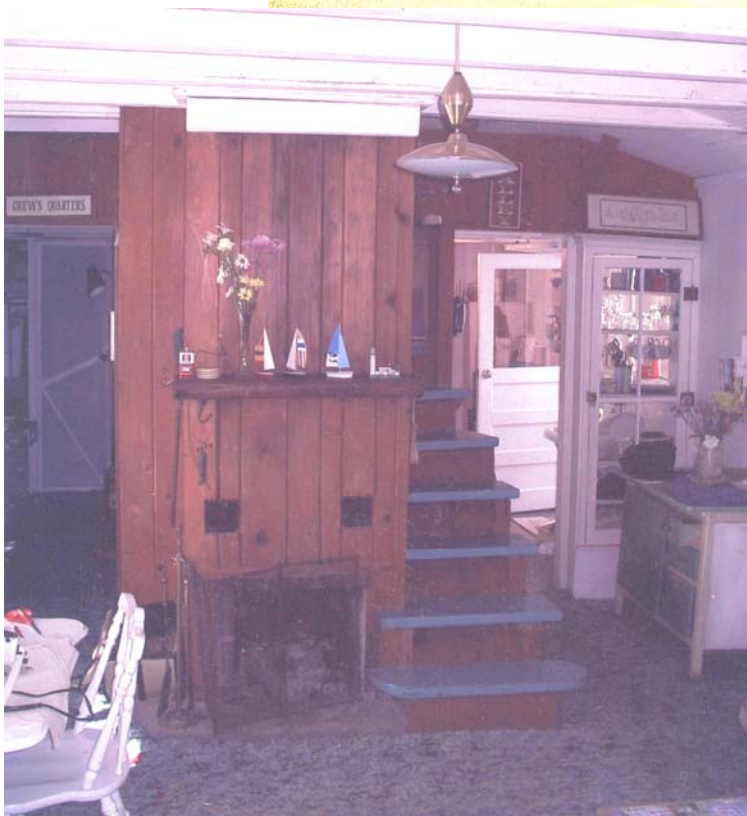


R.E. Harris Cottage

7. R. E. Harris or "Fenmoor"
Cottage, 2254 Lakeisle Avenue

"Fenmoor"
Cottage



"Fenmoor"
Day Cabin

“Fenmoor”
Pilothouse



At what was to become the settlement of Portage, Joseph Stronach, James' uncle, built a water-powered mill, which was located near a present-day landmark on the edge of the streambed of Portage Creek. The 1930 Roscoe E. Harris "Fenmoor," was built by this Lake Forest, Illinois, physics professor from his own plans to resemble a steamboat. The whimsical cottage's symbol on the smokestack is topographic for swamp; and the cottage's name, "Fenmoor," is interpreted as moored in swamp, as the course of Portage Creek, even when it is not inundated from the high waters of the Lakes, often is marshy from a nearby spring-pond.

The R.E. Harris cottage appears on both the National Register of Historic Places and the Michigan State Register of Historic Sites.