

# Rotary Park

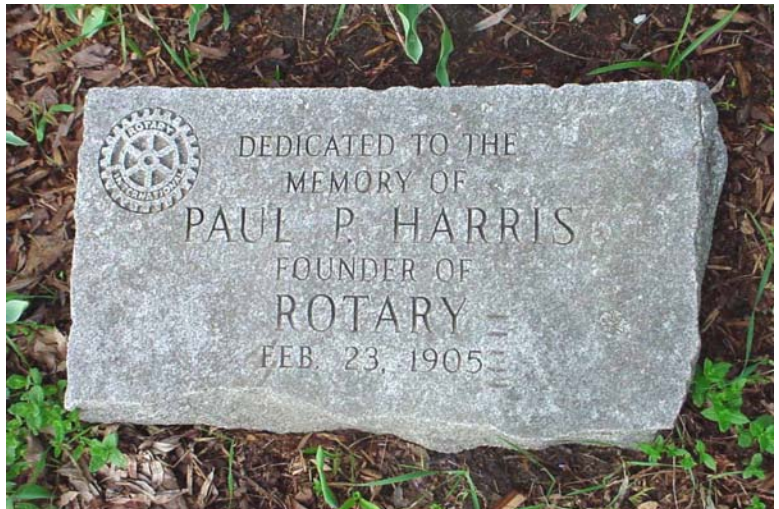
4. Rotary Park, northeast corner of  
Main Street and First Avenue

Bronze Marker

Mr. and Mrs.  
Paul P. Harris



Granite Marker



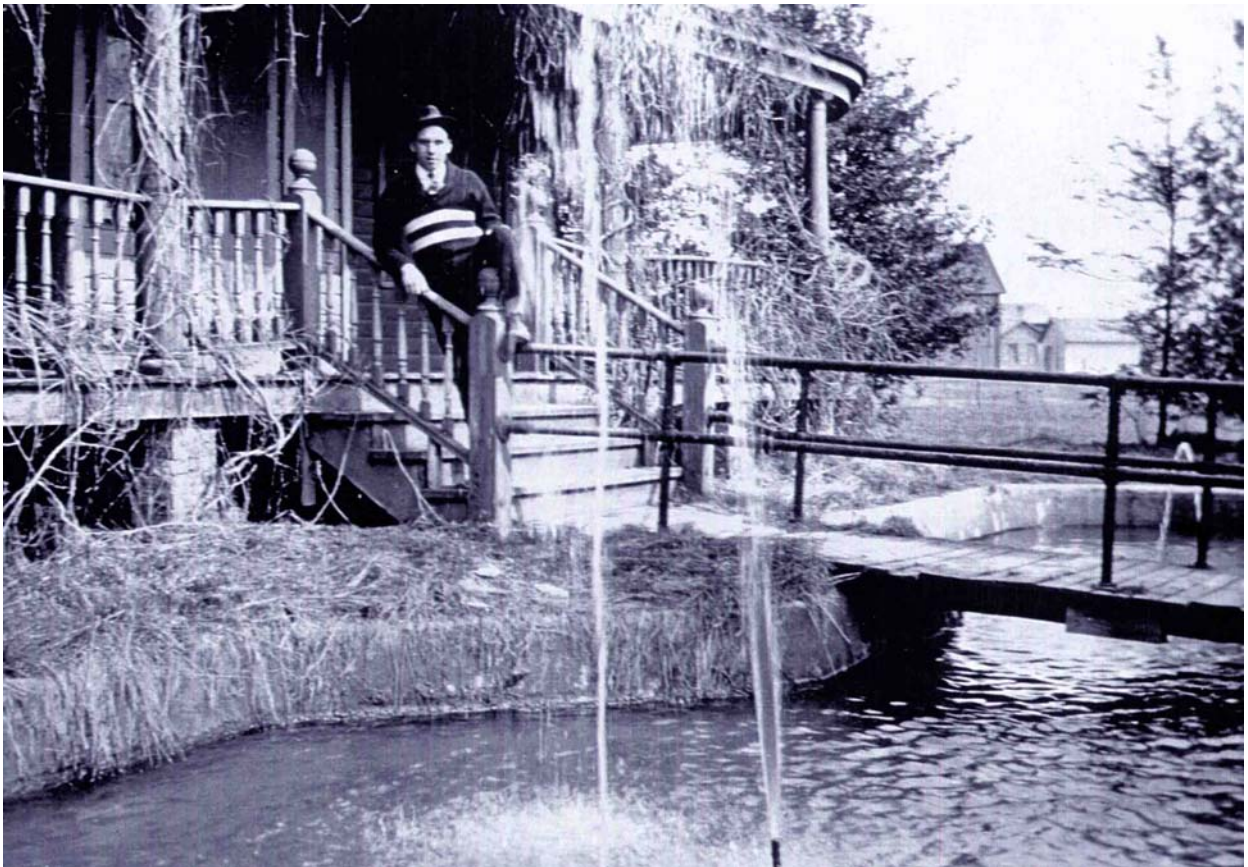
The granite marker originally was placed in 1953 at the Glenwood Resort, where Paul P. Harris (1868-1947), founder of Rotary in



1905, summered for many years. The Manistee Rotary Club placed the bronze marker and the granite marker in Rotary Park, when in 1991 the group dedicated the Park in the memory of Harris.

## An Early Summer Cottage That at One Time Stood on the East Lot of 4698 Main Street





Tom Gerhardt, May 2008