

Too Cold for a Jog? Weather, Exercise, and Socioeconomic Status

(forthcoming in the *B.E. Journal of Economic Analysis & Policy*)

Daniel Eisenberg and Edward Okeke

Department of Health Management and Policy
University of Michigan, School of Public Health
(daneis@umich.edu, blkwrt@umich.edu)

Abstract

This study examines how exercise responds to plausibly exogenous “price shocks,” in the form of weather conditions. Most notably, we find that within cold temperature ranges, a decrease in past-month temperature causes a significant decrease in past-month exercise, and this effect is generally larger for lower education and income groups. In large part this differential by socioeconomic group appears to be due to smaller increases in indoor activity during cold weather. These results suggest that interventions and policies aiming to increase exercise participation, particularly among lower socioeconomic populations, could do so in part by increasing the availability and attractiveness of indoor facilities and activities. Furthermore, to the extent that the higher elasticity of behavior for lower socioeconomic groups reflects a more general sensitivity to external factors, this highlights the promise of interventions that address such factors more broadly.

Acknowledgments

We are grateful for many helpful comments from Martha Bailey, Thomas Buchmueller, Kitt Carpenter, John Cawley, Xiaoxing He, Chad Meyerhoefer, and two anonymous reviewers.

I. INTRODUCTION

The determinants of exercise behavior are not well understood, because they are difficult to disentangle in empirical research. Why do some people exercise while others do not, and what prompts people to start or stop exercising regularly? Many of the commonly hypothesized factors—such as health-related knowledge and beliefs, proximity to other people who exercise, proximity to exercise facilities or activities, and local climate—are likely to be correlated with unmeasured factors that affect exercise, such as preferences related to exercise and health. Thus, while we can easily observe correlations between these factors and exercise, we do not necessarily know to what extent these factors actually cause exercise. If the objective is to increase exercise, an improved understanding of causal factors is an important step towards designing effective interventions and policies.

It is also difficult to generate credible causal estimates that inform why exercise and other health behaviors vary significantly by socioeconomic status. Less educated people are more likely to drink heavily and smoke, and less likely to exercise and eat fruits and vegetables regularly, but the mechanisms behind such differentials are difficult to disentangle (Cutler and Lleras-Muney, 2006). While researchers have posited a wide range of explanations related to discount rates, information, cognitive ability, preferences for health versus other commodities, and social networks, determining the independent causal effects of any of these factors is subject to considerable problems with measurement and selection bias.

This study focuses on how exercise, often referred to in the public health literature as leisure time physical activity (LTPA), responds to weather shocks, and how this response varies by socioeconomic status (SES). Because weather is well-measured and plausibly exogenous, it offers an opportunity to obtain definitive causal estimates related to health behaviors, overall and by socioeconomic status. Improving understanding of the determinants of LTPA is valuable for at least two main reasons. First, numerous studies show strong negative correlations between exercise and the risk of developing heart disease (Berlin and Colditz, 1990) and many other health conditions such as colon cancer (e.g. Gerhardsson et al, 1990). Second, despite these apparent health benefits, fewer than half of American adults engage in regular LTPA (CDC 2007), and this behavior exhibits a large gradient by socioeconomic status (SES), as defined by education or income (He and Baker (2005). This differential in exercise behavior by SES has been posited as a major contributor to the large disparities by SES in obesity and cardiovascular health (Mensah et al, 2005). Although lack of exercise may reflect a well-informed, rational decision by many people, there is also

evidence that it reflects problems with self-control and time-consistency (Della Vigna and Malmendier, 2006).

Our methodological approach is to estimate how weather that is abnormal for a given location and time of year, as measured by temperature and precipitation, affects the likelihood, intensity, and type (indoor versus outdoor) of LTPA. We then examine how this response varies by SES, as measured by income and education.

To preview our results, we find that temperature has a modest, statistically significant effect on LTPA and this effect is generally larger for people with lower educational attainment or lower income. Within cold temperature ranges (which we define as less than 60 degrees Fahrenheit), a five degree decrease in past-month average daily maximum temperature causes a 2.5 percent decrease (relative to the mean) in the probability of meeting CDC guidelines for exercise in the past month, and this effect is 2-3 times larger for some lower education and income groups as compared to the higher SES groups. We also find evidence that suggests substitution between indoor and outdoor activities. Within colder temperature ranges, a decrease in temperature causes a decrease in outdoor activities and an increase in indoor activities. The degree of shifting towards indoor activities during cold weather, however, appears to be lower among lower SES groups, suggesting that differential access to indoor activities may explain a large part of the differential overall response of LTPA to weather shocks.

These results can help inform the design of the large and growing number of interventions to increase physical activity. Given that activity is sensitive to weather conditions and this sensitivity varies by SES, interventions to address LTPA in general and SES differentials in particular may need to be tailored accordingly (e.g. by increasing the availability of indoor activities). From a broader perspective, this analysis tells us something basic about the determinants of health behaviors—in this case, temporary shocks such as current weather conditions matter, and they seem to matter especially for lower income and education groups. The fact that exercise behavior can be manipulated by temporary shocks highlights the opportunity to affect behavior via interventions; furthermore, these temporary shocks may have longer-term implications, given that exercise is believed to be a habit-forming activity (Aarts et al, 1997).

II. RELATED LITERATURE AND HYPOTHESES

Cawley (2004) offers a starting point for thinking about how people make decisions about exercise. In his “SLOTH” framework, people allocate their time to the following activities: sleep (S), leisure (including physical activity) (L), occupation (O), transportation (T), and home production (H). In a utility-maximizing allocation of time, the marginal utility of the last hour spent in each

activity must be the same for all activities. In this framework, one can think of weather as changing the marginal utility of hours spent in outdoor LTPA. For example, an unusually cold day during the winter would decrease the marginal utility of outdoor LTPA. This would cause a decline in outdoor activity and substitution towards other activities. To the extent that indoor and outdoor LTPA are close substitutes, indoor LTPA would increase.

Humphreys and Ruseski (2006, 2007) extend the SLOTH framework on three dimensions: 1) they distinguish between the participation and duration decisions (extensive and intensive margins) for LTPA; 2) they distinguish between types of physical activity (e.g., outdoor versus indoor, and group versus individual); 3) they acknowledge that LTPA often requires not only time but also purchased goods and services. Given this last factor, they show theoretically that income can have a positive effect on the participation decision (e.g., due to the need to buy goods and services associated with the activities) but a negative effect on the duration decision (due to the opportunity cost of time), and they find empirical support for this hypothesis.

Extending their logic, one can see that people with higher income may be less affected by weather shocks, in terms of total LTPA (indoor plus outdoor), if they purchase more goods and services that facilitate indoor LTPA. For example, given that higher income people are more likely to hold a gym membership (Powell et al, 2006; Hillsdon et al, 2007), then the marginal cost of substituting to indoor activities during foul weather may be lower. This may also be true for more educated people, independent of income. For example, if more educated people on average have a lower discount rate or tend to plan future activities more carefully, then they may be more likely to make purchases (such as a gym membership) that will serve as “insurance” against the disutility of not having desirable alternatives for exercise (in terms of benefits and costs) during foul weather. Also, gym memberships may serve as commitment devices (costs paid upfront) for people who are aware of the time-inconsistency in their preferences related to LTPA; part of the calculus for these people may be that they know that weather shocks will deter them from exercising unless they have a low marginal cost alternative in place.¹

¹ Another layer of complexity comes from the fact that many people engage in physical activity in their jobs. As Philipson and Posner (1999) describe, this may have significant implications for LTPA, overall physical activity, and body weight. It is not clear a priori, however, how having a job with significant physical activity would affect the response of LTPA to weather shocks. If, for example, bad weather prevents one from working on an outdoor project, then one might actually increase LTPA in order to maintain a preferred level of overall activity. On the other hand, if occupational activity and LTPA are not considered close substitutes, then this may not occur. Unfortunately the data set we use does not include information on job-related physical activity.

Based on the concepts and literature described above, we begin our empirical analysis with three general hypotheses. First, overall LTPA falls during periods of unusually “bad” (very hot, very cold, or wet) weather, due to the reduced marginal utility of outdoor LTPA. Second, the reduction in outdoor LTPA is at least partially offset by increased indoor LTPA. Third, the overall response of LTPA is inversely related to SES, due to a lesser degree of substitution from outdoor to indoor activity.²

III. METHODS

Empirical Framework

Some studies have demonstrated significant seasonal variation in LTPA, with activity typically peaking in warmer seasons (Pivarnik et al, 2003; Matthews 2001). These correlations, however, would not necessarily identify causal effects of weather. Seasonal variations in LTPA may be due to factors other than weather, such as changes in time allocation related to holiday, school, or work schedules. Also, across-area correlations between climate and LTPA may be due to the fact that people who enjoy exercise locate in areas with milder or drier weather, rather than a true causal relationship. In order to address such confounding factors, we adopt an approach focusing on weather variations that cannot be anticipated. To do this, we include state-by-month fixed effects (a fixed effect for each state-month combination) in our regressions. This approach, in effect, controls for the fact that each state has “typical” weather conditions during each month of the year and people are well aware of these patterns (and they may adjust their habits and even where they decide to live accordingly). The analysis thus focuses on the deviations from the typical patterns, estimating whether unusual temperatures or precipitation for a given state-month combination are associated with a deviation from “normal” exercise behavior in that state-month.

² Whether one is employed or unemployed at a given point in time may also affect the response of LTPA to weather. Ruhm (2000) finds that exercise is positively correlated with the unemployment rate, and Ruhm (2005) finds that exercise increases particularly among previously inactive people during periods of high unemployment. If unemployed people have more flexibility to adapt their exercise schedule to weather fluctuations, they may be able to mitigate the impact of weather shocks on their LTPA. On the other hand, the LTPA of unemployed people may be more affected by inclement weather to the extent that the factors related to lower income and lower education (discussed above) apply to them. Because being employed is highly correlated with education level, we do not conduct separate analyses, but we note here that these results are roughly similar to those by education.

Specifically, we estimate linear regressions (and logistic regressions in sensitivity checks for binary dependent variables) with a full set of state-by-month fixed effects and year fixed effects, as summarized in the following equation:

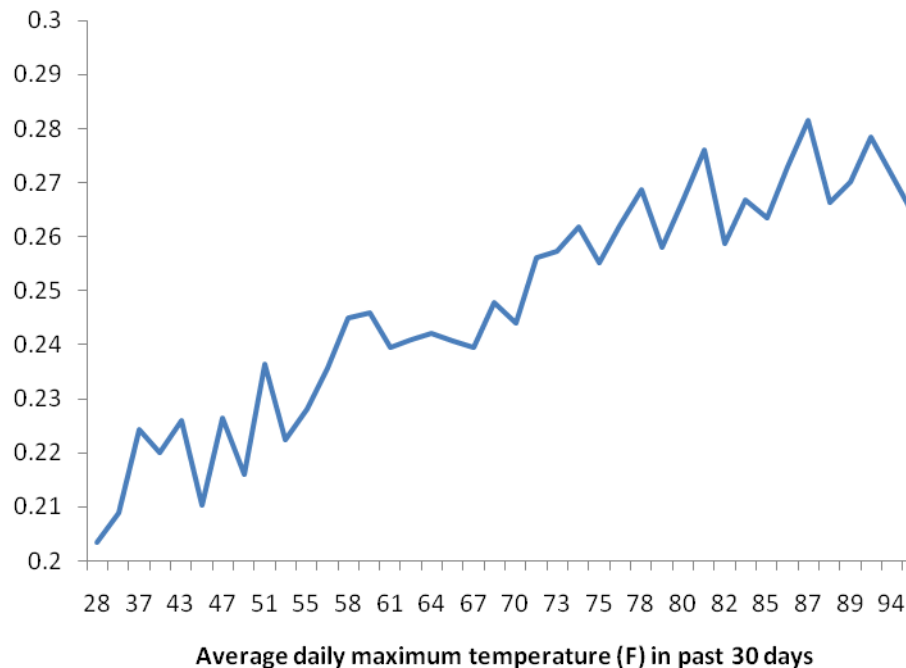
$$LTPA_{isymd} = \beta_0 + \beta_1 tmax30_{symd} + \beta_2 precip30_{symd} + \beta_3 X_i + \gamma_1 statemonth_{sm} + \gamma_2 year_y + \varepsilon_{isymd}$$

Subscripts denote, respectively, person i , state s , year y , month m , and day (calendar date) d . $LTPA$ represents a measure of exercise (as detailed in the next section describing the data), $tmax30$ is the average daily maximum temperature (in Fahrenheit) in the state in the 30 days prior to the date of the BRFSS interview, $precip30$ is the average daily precipitation (in cm) in the state during the prior 30 days, X is a set of demographic variables (age categories and gender), $statemonth$ is a full set of dummies interacting state and month ($48 \times 12 = 576$ dummies), and $year$ is a full set of year dummies (1993-2000).

We specify a functional form allowing for a nonlinear relationship between $LTPA$ and temperature. In particular, we hypothesize that the relationship is positive in lower temperature ranges and negative in higher temperature ranges. In other words, very cold and very hot temperatures are less conducive to exercise, as compared to moderate temperatures. To allow for this possibility, we estimate the regression described above with linear splines in the relationship between $tmax30$ and $LTPA$. This allows for different slopes over different intervals of $tmax30$. We chose three intervals: $tmax30 < 60$, $60 \leq tmax30 \leq 80$, and $tmax30 > 80$, based on a simple plot of $LTPA$ and $tmax30$ (Figure 1), which roughly shows a steeper slope below 60 degrees, a flatter but still positive slope between 60 and 80, and a flat slope above 80 (t-tests comparing the slopes of these splines confirm that they are different at $p < 0.01$ in each pairwise comparison). By contrast, because we hypothesize that precipitation has a monotonically negative relationship with the net benefit of exercise, we specify precipitation as a linear term.

We then estimate all regressions by SES group, defined by either education or income group, in order to evaluate whether certain types of people are more sensitive to adverse weather. All regressions include Taylor series linearized standard errors clustered by state.

**Figure 1: Exercise (Proportion Meeting CDC Guidelines),
by Average Daily Maximum Temperature (F) in past 30 days**



Data points represent proportion of people in BRFSS (1993-2000) meeting CDC guidelines for regular exercise in each of 40 quantiles defined by average daily maximum temperature (Fahrenheit) in the past 30 days.

Data and Variables

We link two publicly available data sets: individual level data from the Behavioral Risk Factor Surveillance System (BRFSS) and weather data from the National Climatic Data Center (NCDC). BRFSS is an annual, cross-sectional, telephone-based survey of adults 18 and older that asks about health-related behaviors, and is representative at both state and national levels. Our sample includes the 48 contiguous states and years 1993-2000. Questions about leisure time physical activity (LTPA) were asked in all 48 states during the even years, and in a subset of states (ranging in number from 10 to 12 depending on the year) that opted to include them during the odd years. Our total sample with information about LTPA consists of 522,939 people. We do not include more recent years because in 2001 the BRFSS stopped asking about *types* of LTPA, which are important for our analysis of outdoor versus indoor activities. We link the individual-level

BRFSS data to state-level weather data using the exact BRFSS interview date and state identifiers.

Regarding LTPA, BRFSS asked respondents a series of questions, as follows. All respondents were first asked, “During the past month, did you participate in any physical activities or exercises such as running, calisthenics, golf, gardening, or walking for exercise?” If the answer was yes, respondents were then asked, “What type of physical activity or exercise did you spend the most time doing during the past month?” The respondents could then select from a list of 56 activities (see Appendix A) including items such as “jogging,” “basketball,” and “health club exercise.” The respondents were then asked two follow-up questions for the selected activity: “How many times per week or per month did you take part in this activity during the past month?” and “And when you took part in this activity, for how many minutes or hours did you usually keep at it?”

For those who reported an exercise activity, BRFSS then queried about a second activity: “Was there another physical activity or exercise that you participated in during the last month?” If the answer was yes, respondents were asked, “What other type of physical activity gave you the next most exercise during the past month?” followed by the questions above regarding frequency and duration. In our main analyses, we examine three different measures of LTPA: 1) whether the individual met recent CDC guidelines for LTPA; 2) whether the individual reported any LTPA (the extensive margin); 3) the number of hours per week of LTPA, among those who reported any (the intensive margin).

The CDC guidelines recommend that adults engage in “moderate-intensity physical activities for at least 30 minutes on 5 or more days of the week” or “vigorous-intensity physical activity on 3 or more days per week for 20 or more minutes per occasion” (CDC 2006). The guidelines include specifics about which activities are considered “moderate-intensity” and “vigorous-intensity.” In order to construct an indicator variable for meeting these guidelines, we first code each activity in the BRFSS data as “moderate-intensity” or “vigorous-intensity” based on the guide provided by the CDC. This guide defines activities with metabolic equivalents of 3-6 as moderate and more than 6 as vigorous (see http://prevention.sph.sc.edu/tools/docs/documents_compendium.pdf). Because the CDC guidelines do not explicitly state how one might meet them through some combination of moderate and vigorous activities, we make the assumption that one session of moderate activity (of 30 or more minutes) is equivalent to three-fifths of a session of vigorous activity (of 20 or more minutes). We chose the 3/5 ratio based on the fact that the CDC recommends either three instances of vigorous activity or five of moderate. We then coded a person as meeting the CDC guidelines if he or she completed the equivalent of 3 sessions of vigorous

activity per week. So, for example, a person could accomplish this through 2 weekly sessions of vigorous activity and 2 of moderate activity.

In some specifications we classify LTPA according to whether the activity is outdoor or indoor. For some activities such as fishing, mowing the lawn, and health club exercise, the outdoor/indoor classification is clear, whereas for other activities the classification is not clear (e.g., jogging, which could easily be outdoor or indoor on a treadmill). Therefore we classify activities according to whether they were "clearly outdoor," "mostly outdoor," "clearly indoor," or "mostly indoor." Because we are not aware of definitive data to guide these classifications, we use our own judgments. The Appendix shows our classifications and other information about each activity that BRFSS respondents could list. In our primary analysis of the outdoor/indoor dichotomy, we use broader definitions, which include both the "clearly" and the "mostly" categories. As a specification check, we re-run the analyses, restricting the definitions of outdoor and indoor activities to the more clear-cut cases.

Weather data are taken from the National Climatic Data Center's (NCDC) Cooperative Summary of the Day, TD 3200, a database containing historical daily weather measures from over 20,000 weather stations in the U.S. To match the past-month time frame of the exercise variables, we construct weather variables that summarize conditions over the 30 days preceding each respondent's interview date within that person's state of residence. For temperature, we reason that daily maximum temperatures are more relevant for physical activity than daily minimum temperatures (and daily time-weighted average temperatures are not available in the databases we use), because the maximum would better approximate the conditions during most people's waking hours. Therefore, we calculate the average daily maximum temperature over the past 30 days within the state. Similarly, we calculate the average daily precipitation (in centimeters) over the past 30 days within the state.

We aggregate individual weather station data into state-level weather measures in two steps. First, we aggregate individual weather station measures up to division level averages (in U.S. weather databases, each state is divided into up to 9 geographic divisions). Second, we calculate a weighted average of division-level measures within each state-day, where the weights are equal to the land areas of the divisions. Ideally we would weight weather station data by surrounding population mass, but this was not feasible given available data. To address the fact that our state-level weather measures are probably less accurately matched to individuals in states with more land area, we conduct sensitivity analyses using only the 24 continental states below the median in land area.

We measure SES in two ways: by educational attainment and by income. Defining SES by educational attainment, we group people into three categories: less than or equal to a high school degree or equivalent, some college but no

college degree, and greater than or equal to a college degree or higher. Defining SES by household income, we group people into four categories: less than \$15,000, \$15,000-\$25,000, \$25,000-\$50,000, and more than \$50,000. These categories were chosen based on the limited categories in the BRFSS data.

We include several control variables in the analysis. Demographic variables include age (divided into 6 categorical dummies: 18-24, 25-34, 35-44, 45-54, 55-64, 65 and older), gender, marital status (married or not), and race/ethnicity (white, non-Hispanic; black, non-Hispanic; white Hispanic; black Hispanic; other Hispanic; Asian or Pacific Islander; American Indian or Alaska Native; other non-Hispanic). In addition, we measure employment status based on whether the respondent reports being currently employed. We also include a measure of location type (metro, urban, or rural). In sensitivity checks, we conduct the analysis without these covariates. Given that these variables should not be correlated with weather shocks, we would not expect the results to be sensitive to their inclusion or exclusion (although we use them in our main analysis with the aim of improving the efficiency of our estimates).

IV. RESULTS

Descriptive Statistics

Table 1 shows mean values for all variables used in the analysis. Twenty four percent of people met CDC recommendations for exercise, and 70.8% reported any exercise activity in the past 30 days. Those reporting any exercise averaged 4.36 hours per week (SD = 5.4 hours). Sixty percent of people engaged in outdoor exercise (defined as "mostly" or "clearly" outdoor, as shown in the Appendix) in the past 30 days, whereas indoor exercise (similarly defined) was less common (22.2%). Fifty nine percent of the sample was female, 55% were married, and 62.6% were employed. The three most common race/ethnicity categories were white non-Hispanic (83.5%), black non-Hispanic (7.4%), and white Hispanic (4.0%). Finally, we note that the BRFSS interview dates for our sample were relatively evenly divided across months of the calendar year: each month accounted for between seven and nine percent of the sample.

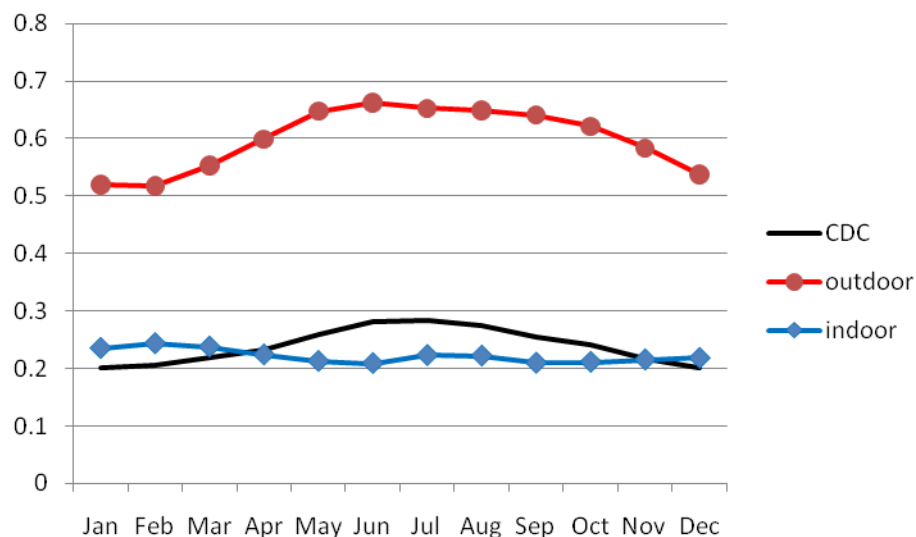
For descriptive purposes, we show the seasonal variation in LTPA in Figures 2, 3a, 3b, 4a, and 4b. In the overall sample (all continental states in the U.S.) (Figure 2), the probability of meeting CDC guidelines for LTPA follows a clear seasonal pattern, with the highest values (up to 28%) during the summer months (June-August) and the lowest (down to 20%) during winter months (December-February). This is driven by fluctuations in outdoor activities, which follow the same pattern. Indoor activity, by contrast, is relatively flat across the year, at 21-22%, except for a small tick upwards to 24% during January-March.

Table 1: Means of key variables

	Mean	SD
<i>Dependent variables:</i>		
Met CDC recommendations for exercise, past 30 days	24.0%	
Any exercise, past 30 days	70.8%	
Hours of exercise (among those with any), past 30 days	4.36 hrs	5.4 hrs
Outdoor exercise, past 30 days	60.0%	
Indoor exercise, past 30 days	22.2%	
<i>Independent variables:</i>		
Temperature (average Fahrenheit daily max past 30 days)	66.1 F	18.1 F
Precipitation (average cm past 30 days)	0.3 cm	0.2 cm
Age	46.8 yrs	17.6 yrs
Female	59.0%	
Married	55.0%	
Employed	62.6%	
White Non-Hispanic	83.5%	
Black Non-Hispanic	7.4%	
White Hispanic	4.0%	
Black Hispanic	0.3%	
Other Hispanic	1.9%	
Asian/Pacific Islander	1.3%	
American Indian/Alaska Native	1.1%	
Other Non-Hispanic	0.6%	
<\$15,000 household income	16.5%	
\$15,000 - \$25,000	21.5%	
\$25,000 - \$50,000	36.8%	
>\$50,000	25.2%	
HS degree or less	46.1%	
Some college	27.8%	
College degree	26.1%	

Data: BRFSS (N=522,939) and National Climatic Data Center (1993-2000)

Figure 2: Exercise by Month of Year, Full Sample (All Continental States)



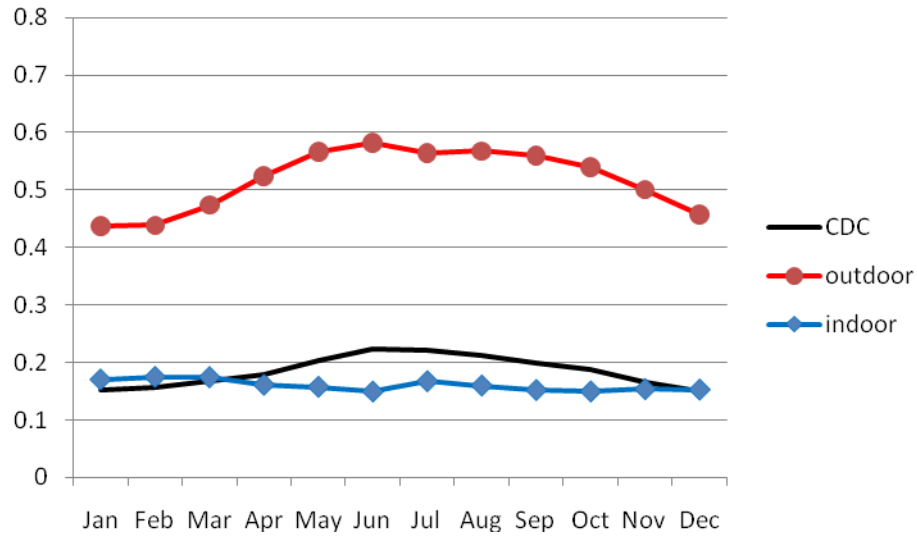
CDC = proportion meeting CDC guidelines for regular exercise in past 30 days
outdoor = proportion engaging in any outdoor exercise in past 30 days
indoor = proportion engaging in any indoor exercise in past 30 days

Figures 3a and 3b compare the seasonal trends for people with lower education (high school degree or less) versus people with higher education (college degree or more). The patterns appear similar except that the levels are shifted down for people with lower education. People with higher education have a slightly larger uptick in indoor activity during the winter, which we also find in the causal estimates in our main regression analyses, as discussed later.

Figures 4a and 4b compare the seasonal trends for the 10 coldest states (those with the lowest average temperature) versus the 10 warmest states in our sample. As expected, the colder states exhibit large differences in LTPA across the seasons, with substantially higher levels of outdoor activity and overall activity during the summer as compared to the winter (and increased indoor activity during the winter). By contrast, the warmer states exhibit more modest differences across the seasons in outdoor and overall LTPA, and little change in indoor activity. Although these patterns do not necessarily reflect purely causal effects of weather, for reasons discussed earlier, they are generally consistent with the causal estimates that we discuss later.³

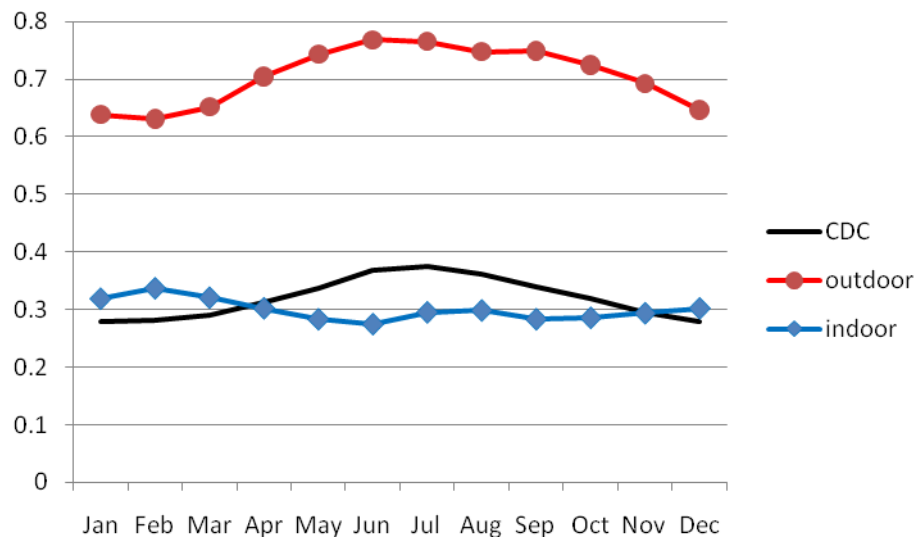
³ We also examined differential seasonal trends by SES, across cold versus warm states (i.e., essentially the interaction of Figures 3a/3b and Figures 4a/4b), but did not find any notable patterns beyond those evident in the Figures 3a, 3b, 4a, and 4b.

Figure 3a: Exercise by Month of Year, People with HS degree or less

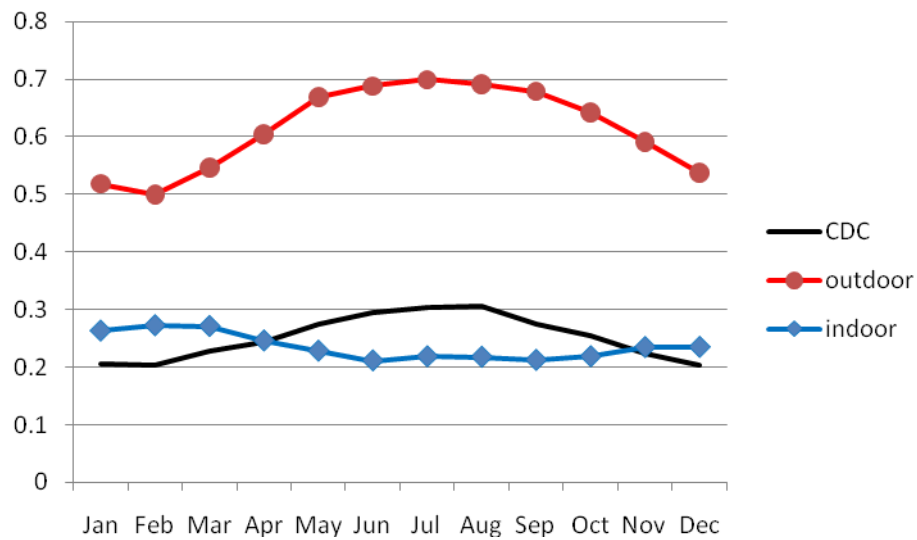


See notes to Figure 2 for variable definitions.

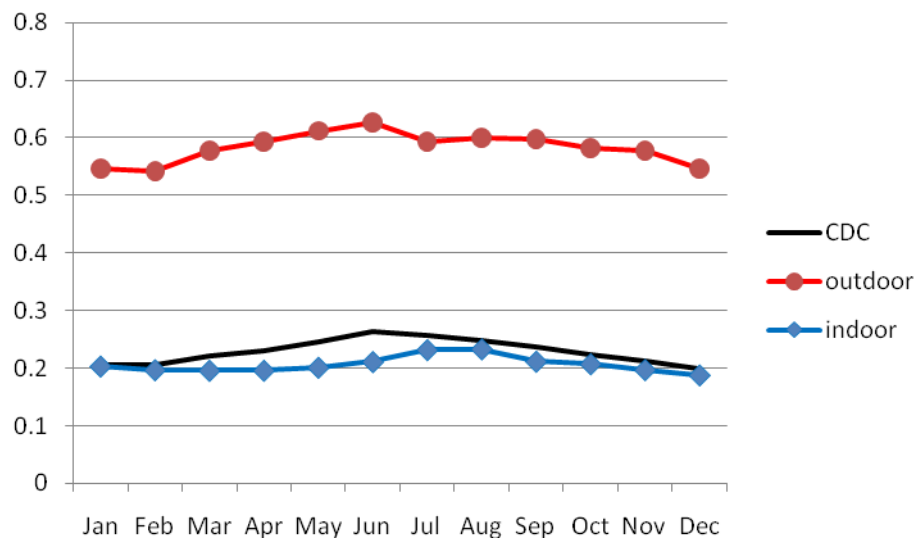
Figure 3b: Exercise by Month of Year, People with College Degree or More



See notes to Figure 2 for variable definitions.

Figure 4a: Exercise by Month of Year, 10 Coldest States

See notes to Figure 2 for variable definitions; 10 coldest (lowest average temperature) states in the sample are, from coldest to warmest: ME, MN, ND, VT, MI, WI, MT, NY, SD, ID.

Figure 4b: Exercise by Month of Year, 10 Warmest States

See notes to Figure 2 for variable definitions; 10 warmest states in the sample are, from warmest to coldest: FL, TX, LA, AZ, AL, GA, SC, OK, CA, AR.

Table 2: Exercise, by Education and by Income

	Exercise (met CDC guidelines, past 30 days)	Any exercise (past 30 days)	Hrs per wk exercise, given any (past 30 days)
HS degree or less	19%	61%	4.38
Some college	25%	76%	4.38
College degree	32%	83%	4.33
<\$15,000 income	19%	58%	4.34
\$15,000 - \$25,000	21%	66%	4.35
\$25,000 - \$50,000	25%	74%	4.35
>\$50,000	31%	83%	4.44

Data: BRFSS 1993-2000, N = 522,939

Notes: differences in means across education and income categories are significant at $p < 0.01$ for the first two measures of exercise (met CDC guidelines, and any exercise), whereas the differences in hours per week are significant only for college versus others ($p = 0.03$) and $> \$50,000$ versus others ($p < 0.01$).

LTPA is negatively associated with SES (Table 2), which is consistent with studies noted earlier. For example, 19% of people with a high school degree or less met CDC guidelines for LTPA, as compared to 32% of people with a college degree. These patterns are similar across income categories. The differentials by SES categories in meeting CDC guidelines and exercising at all are all significant at $p < 0.01$. On the other hand, among people who exercised at all, the number of hours per week shows little variation across SES groups. This indicates that the disparities in exercise by SES are along the extensive, rather than intensive, margin.

Effects of Weather on Exercise

Table 3 shows our main results for the overall sample. The most robust relationship appears to be that between temperature within the low range (< 60 degrees) and LTPA. This relationship is significantly positive at $p < 0.01$ for each measure of LTPA. Consistent with our hypothesis, this indicates that LTPA decreases as the temperature drops within cold temperature ranges (or that LTPA increases as the temperature rises). The magnitude of these estimates is modest, implying that, for example, a 5 degree drop in temperature causes the following: a

0.6 percentage point decline in meeting CDC guidelines (or 2.5 percent relative to the mean), a 1.1 percentage point decline in any exercise participation (3 percent relative to the mean), and a 0.06 decline in hours per week among those who exercise (1.4 percent relative to the mean). To place in context a 5 degree reduction in within-state-month temperature, consider that 84% of state-month combinations have at least one value (over the 8 years of data) that is 5 or more degrees below the state-month mean, and the average standard deviation in temperature within state-month is 3.8 degrees. Thus, a 5 degree reduction in temperature might be considered substantial but not exceptionally rare.

In the middle and high temperature ranges, exercise is not significantly associated with temperature at $p < 0.05$. Also, precipitation is significantly associated ($p < 0.05$) with meeting CDC guidelines for LTPA but not with the other two measures of LTPA. The magnitude of the significant estimate for precipitation is small, implying that people are 0.3 percentage points less likely to meet CDC guidelines during months with precipitation per day reduced by one standard deviation (0.2 cm).

Table 4 shows analogous estimates broken down by education categories. These estimates provide some support for our hypothesis that the LTPA of lower SES groups is more sensitive to temperature shocks. Focusing on the lower temperature range (<60 degrees), where the relationship with LTPA is most robust in the overall sample, one can see that people with a college degree have a smaller response to temperature shocks than less educated groups. This difference in coefficients is significant at $p < 0.05$, however, only for the second dependent variable (any exercise), when comparing the highest and lowest education groups. Relative to mean exercise participation (which is lower among lower SES groups, as already shown in Table 2), these coefficients imply effects 2-3 times larger among those with a high school degree or less, as compared to those with a college degree.

The estimates by income category (Table 5) provide additional support for the hypothesis that lower SES groups are more sensitive to temperature shocks within the lower temperature ranges. In particular, people in households earning more than \$50,000 have a smaller response to temperature, within the lower temperature range, than people earning \$15,000-\$25,000 or \$25,000-\$50,000. The differences in coefficients for people over \$50,000 and people between \$15,000-\$25,000 are significant at $p < 0.05$ for the outcomes of meeting CDC guidelines and any exercise (but not for hours of exercise). Like the differential effects by education, these differential effects by income translate to effects 2-3 times larger among those from the lower SES groups, when the effects are compared to mean exercise participation.

On the other hand, the results for the lowest income group (\$0-\$15,000) do not fit with these patterns, as the estimates for that group are not statistically different from zero. This may be partly due to the lower precision of these estimates (as evidenced by the smaller sample size and higher standard errors), and partly due to the fact that a low proportion of these people are employed (33%, as compared to 63% of the overall sample) and as a result they may have quite different exercise habits and responses (e.g., they may have more flexibility to exercise during different times or days in response to weather shocks, which would help offset other factors – such as lack of gym memberships – associated with low SES). We have only a crude control variable for employment (a binary indicator), whereas a measure of hours worked per week would be needed to account for this issue more completely.

Table 3: Effect of Weather on Exercise, Full Sample

Dep. Var.:	Exercise (CDC recs)		Exercise (any)		Exercise (hours any)	
	<i>Coeff.</i>	<i>SE</i>	<i>Coeff.</i>	<i>SE</i>	<i>Coeff.</i>	<i>SE</i>
Temp (<60)	0.0012***	0.0002	0.0021***	0.0004	0.0120***	0.0043
Temp (60,80)	0.0002	0.0003	0.0009	0.0006	0.0006	0.0078
Temp (>80)	-0.0006	0.0007	0.0006	0.0007	-0.0175*	0.0990
Precip (cm)	-0.0138**	0.0065	0.0003	0.0092	-0.0755	0.0919

*Method: linear regressions w/ state*month & year fixed effects, splines for temperature, and standard errors clustered by state.*

*Data: NCDC, BRFSS 1993-2000, N = 522,939; *** : p<0.01 (two-tailed t-test); ** : p<0.05; * : p<0.10*

Table 4: Effect of Weather on Exercise, By Education

Dep. variable:	Exercise (CDC recs)		Exercise (any)		Exercise (hrs any)	
	<i>Coeff.</i>	<i>SE</i>	<i>Coeff.</i>	<i>SE</i>	<i>Coeff.</i>	<i>SE</i>
<u><=HS degree</u>						
Temp (<60)	0.0012***	0.0003	0.0025***	0.0004	0.0094	0.0068
Temp (60,80)	0.0003	0.0005	0.0007	0.0007	0.0049	0.0096
Temp (>80)	-0.0002	0.0006	0.0004	0.0010	-0.0117	0.0141
Precip (cm)	-0.0131	0.0081	-0.0054	0.0123	0.0235	0.1603
<u>Some college</u>						
Temp (<60)	0.0015***	0.0003	0.0022***	0.0006	0.0172***	0.0061
Temp (60,80)	-0.0006	0.0006	0.0007	0.0009	-0.0054	0.0126
Temp (>80)	0.0002	0.0007	0.0013*	0.0007	-0.0124	0.0086
Precip (cm)	-0.0206*	0.0121	0.0035	0.0113	-0.0673	0.1626
<u>College degree</u>						
Temp (<60)	0.0008**	0.0004	0.0013***	0.0004	0.0097**	0.0047
Temp (60,80)	0.0008	0.0006	0.0014**	0.0007	0.0001	0.0086
Temp (>80)	-0.0023*	0.0013	0.0000	0.0009	-0.0311*	0.0157
Precip (cm)	-0.0081	0.0107	0.0083	0.0130	-0.2104**	0.0982

*Method: linear regressions w/ state*month & year fixed effects, splines for temperature, and standard errors clustered by state.*

Data: NCDC and BRFSS 1993-2000, N = 522,939

***: p<0.01 (two-tailed t-test); **: p<0.05; *: p<0.10

Table 5: Effect of Weather on Exercise, By Income

Dep. Var.:	Exercise (CDC recs)		Exercise (any)		Exercise (hrs any)	
	<i>Coeff.</i>	<i>SE</i>	<i>Coeff.</i>	<i>SE</i>	<i>Coeff.</i>	<i>SE</i>
<u><\$15,000</u>						
Temp (<60)	0.0006	0.0005	0.0012	0.0007	0.0010	0.0121
Temp (60,80)	0.0001	0.0007	0.0012	0.0010	0.0148	0.0133
Temp (>80)	-0.0018	0.0016	0.0000	0.0012	-0.0350	0.0330
Precip (cm)	-0.0108	0.0106	0.0081	0.0183	-0.1895	0.2785
<u>\$15,000-\$25,000</u>						
Temp (<60)	0.0020 ^{***}	0.0004	0.0029 ^{***}	0.0005	0.0187 ^{***}	0.0060
Temp (60,80)	0.0001	0.0008	-0.0016	0.0010	-0.0132	0.0147
Temp (>80)	-0.0004	0.0008	-0.0004	0.0014	0.0066	0.0200
Precip (cm)	-0.0246 ^{**}	0.0120	-0.0193	0.0167	0.1208	0.1978
<u>\$25,000-\$50,000</u>						
Temp (<60)	0.0013 ^{***}	0.0004	0.0026 ^{***}	0.0005	0.0099	0.0070
Temp (60,80)	0.0007	0.0004	0.0023 ^{**}	0.0009	0.0091	0.0088
Temp (>80)	-0.0008	0.0010	0.0003	0.0010	-0.0175	0.0131
Precip (cm)	-0.0004	0.0091	0.0106	0.0121	0.0378	0.1206
<u>>\$50,000</u>						
Temp (<60)	0.0009 ^{**}	0.0004	0.0014 ^{***}	0.0005	0.0123 ^{***}	0.0044
Temp (60,80)	0.0000	0.0006	0.0007	0.0007	-0.0071	0.0102
Temp (>80)	-0.0014	0.0012	0.0007	0.0008	-0.0257	0.0174
Precip (cm)	-0.0249	0.0151	0.0086	0.0130	-0.2543 [*]	0.1303

*Method: linear regressions w/ state*month & year fixed effects, splines for temperature, and standard errors clustered by state. ***: p<0.01 (two-tailed t-test); **: p<0.05; *: p<0.10*

Data: NCDC, BRFSS 1993-00, N = 522,939

Outdoor versus Indoor Exercise

The results in Table 6 show how outdoor exercise and indoor exercise respond to changes in weather. Again, the significant coefficients are for temperature in the low temperature range. In this range, as expected, temperature is positively associated with outdoor exercise and negatively associated with indoor exercise. The coefficient for outdoor exercise is much higher in absolute value, but relative to mean levels of participation (which are higher for outdoor exercise), the coefficients are similar in magnitude. Also, as one would expect, the sum of the coefficients for outdoor and indoor activities ($0.0032 - 0.0008 = 0.0024$) corresponds closely to the coefficient for overall exercise (0.0021, in Table 3).

Table 6: Effect of Weather on Indoor and Outdoor Exercise, Full Sample

Dep. variable:	Outdoor Exer. (past 30 days)		Indoor Exer. (past 30 days)	
	<i>Coeff.</i>	<i>SE</i>	<i>Coeff.</i>	<i>SE</i>
Temp (<60)	0.0032***	0.0004	-0.0008***	0.0003
Temp (60,80)	0.0007	0.0007	-0.0002	0.0004
Temp (>80)	0.0000	0.0008	0.0009	0.0007
Precip (cm)	-0.0044	0.0101	-0.0059	0.0062

*Method: linear regressions w/ state*month & year fixed effects, splines for temperature, and standard errors clustered by state.*

*Data: NCDC and BRFSS 1993-2000, N = 522,939; ***: p<0.01 (two-tailed t-test); **: p<0.05; *: p<0.10*

We next examine how outdoor and indoor exercise responds to weather differentially by SES (education in Table 7, income in Table 8). These results help illuminate why we find that the LTPA of lower SES groups is generally more sensitive to temperature shocks in the cold range. In part, the answer appears to be that outdoor activity declines more substantially as temperature drops, among lower SES groups (i.e., this coefficient is larger for lower SES groups, though the differences are not significant at $p<0.05$). In addition, lower SES groups appear less likely to shift to indoor activities; in both tables, the coefficients for the two lower SES groups are closer to zero and not statistically significant, whereas the coefficients for the two higher SES groups are larger (more negative) and significant (though, again, the *differences* are not significant at $p<0.05$).

Table 7: Effect of Weather on Indoor/Outdoor Exercise, By Education

Dep. variable:	Outdoor Exer. (past 30 days)		Indoor Exer. (past 30 days)	
	<i>Coeff.</i>	<i>SE</i>	<i>Coeff.</i>	<i>SE</i>
<u>HS degree or less</u>				
Temp (<60)	0.0034***	0.0004	-0.0004	0.0003
Temp (60,80)	0.0006	0.0007	0.0000	0.0005
Temp (>80)	-0.0005	0.0009	0.0016**	0.0006
Precip (cm)	-0.0154	0.0146	-0.0022	0.0087
<u>Some college</u>				
Temp (<60)	0.0036***	0.0006	-0.0013**	0.0006
Temp (60,80)	0.0003	0.0010	-0.0003	0.0005
Temp (>80)	0.0006	0.0009	0.0007	0.0010
Precip (cm)	0.0020	0.0133	-0.0146	0.0107
<u>College degree</u>				
Temp (<60)	0.0027***	0.0005	-0.0012***	0.0004
Temp (60,80)	0.0012*	0.0007	-0.0002	0.0007
Temp (>80)	0.0001	0.0009	0.0001	0.0015
Precip (cm)	0.0084	0.0132	-0.0027	0.0096

*Method: lin. regs. w/ state*month & year FE's, splines for temperature, SE's clustered by state.*

Data: NCDC and BRFSS 1993-2000, N = 522,939

***: p<0.01 (two-tailed t-test); **: p<0.05; *: p<0.10

Table 8: Effect of Weather on Indoor and Outdoor Exercise, By Income

Dep. variable:	Outdoor Exer. (past 30 days)		Indoor Exer. (past 30 days)	
	<i>Coeff.</i>	<i>SE</i>	<i>Coeff.</i>	<i>SE</i>
<u><\$15,000</u>				
Temp (<60)	0.0025 ^{***}	0.0007	-0.0008 ^{**}	0.0004
Temp (60,80)	0.0011	0.0009	0.0000	0.0008
Temp (>80)	-0.0011	0.0014	0.0014	0.0010
Precip (cm)	0.0039	0.0200	0.0039	0.0160
<u>\$15,000-\$25,000</u>				
Temp (<60)	0.0039 ^{***}	0.0007	-0.0002	0.0005
Temp (60,80)	-0.0013	0.0011	-0.0011 [*]	0.0007
Temp (>80)	-0.0007	0.0014	0.0003	0.0010
Precip (cm)	-0.0212	0.0186	-0.0055	0.0102
<u>\$25,000-\$50,000</u>				
Temp (<60)	0.0037 ^{***}	0.0004	-0.0010 ^{**}	0.0005
Temp (60,80)	0.0024 ^{**}	0.0009	-0.0001	0.0007
Temp (>80)	-0.0008	0.0010	0.0007	0.0010
Precip (cm)	-0.0004	0.0129	-0.0019	0.0080
<u>>\$50,000</u>				
Temp (<60)	0.0028 ^{***}	0.0006	-0.0012 ^{**}	0.0005
Temp (60,80)	0.0004	0.0007	-0.0004	0.0005
Temp (>80)	0.0009	0.0013	0.0008	0.0012
Precip (cm)	0.0023	0.0140	-0.0069	0.0109

*Method: lin. regs. w/ state*month & year FE's, splines for temperature, SE's clustered by state.*

Data: NCDC and BRFSS 1993-2000, N = 522,939

***: p<0.01 (two-tailed t-test); **: p<0.05; *: p<0.10

Roughly, half of the differential response of overall exercise participation by SES appears to be attributable to a larger response of outdoor activity, and half to a lower amount of shifting to indoor activity. For example, consider the comparison of people with income of \$15,000-\$25,000 as compared to those with greater than \$50,000. As shown in Table 5, the lower SES group has a coefficient of 0.0029 for any exercise participation in the colder temperature range, as compared to 0.0014 for the higher SES group, equating to a differential response of 0.0015. As shown in Table 8, the difference in outdoor activity coefficients is 0.0011 (0.0039-0.0028) and the difference in indoor activity coefficients is 0.0010 (-0.0002-(-.0012)). Each of these differentials accounts for a bit more than half of the 0.0015 differential (note that the differentials for indoor and outdoor effects do not necessarily add exactly to the overall differential in exercise).

In interpreting the shifts from outdoor to indoor activities, it is important to keep in mind that we cannot definitively identify within-person substitution of one type of activity for another. Recall that the BRFSS are cross-sectional – we only have one observation per person. Therefore, within-person substitution is not the only possible explanation for the patterns we observe. Another possibility is that when the temperature is unusually cold, some people increase their indoor activity, whereas *other* people decrease their outdoor activity. In other words, the apparent “substitution” may be due to different responses across different people, rather than within-person responses.

Cold versus Warm States

Next, we conduct stratified analyses by warmer versus colder states (10 states with the warmest average temperature in our sample, as compared to the 10 with the coldest). We might expect to see differential responses to changes in weather on the margin, as a result of being more accustomed in general to colder or warmer temperatures. The results for this stratified analysis are shown in Table 9. Overall LTPA, as measured by meeting CDC guidelines, is affected the same amount by temperature in the cold range, although this coefficient is only significant in the colder states. Both outdoor and indoor activity exhibit similar responses to temperature in the colder range, again comparing colder versus warmer states. Interestingly, in the warm temperature range (above 80 degrees), unusually hot weather causes a decrease in LTPA in colder states but not in warmer states (and as expected, this decrease appears to be primarily related to outdoor exercise). This implies that the physical activity of people in northern states is more sensitive to unusually hot weather, perhaps because they are less accustomed in general to hot weather. Finally, in results not shown (available on request), we do not find any notable differences across colder versus warmer states in the differential responses by SES.

Table 9: Effect of Weather on Exercise, Cold vs Warm States

Dep. Var.:	met CDC recs (past 30 days)			Outdoor exer. (past 30 days)			Indoor exer. (past 30 days)		
	<i>Coeff.</i>	<i>SE</i>		<i>Coeff.</i>	<i>SE</i>		<i>Coeff.</i>	<i>SE</i>	
<u>10 Coldest States</u>									
Temp (<60)	0.0007	0.0002	***	0.0031	0.0004	***	-0.0014	0.0004	***
Temp (60,80)	0.0002	0.0007		-0.0009	0.0001		0.0002	0.0007	
Temp (>80)	-0.0038	0.0016	**	-0.0045	0.0028		-0.0012	0.0016	
Precip (cm)	-0.0439	0.0253		-0.0209	0.0249		0.0010	0.0213	
<u>10 Warmest States</u>									
Temp (<60)	-0.0007	0.0006		0.0040	0.0010	***	-0.0014	0.0009	
Temp (60,80)	0.0006	0.0006		0.0010	0.0017		0.0006	0.0004	
Temp (>80)	0.0000	0.0011		0.0002	0.0012		0.0013	0.0011	
Precip (cm)	0.0025	0.0115		-0.0093	0.0193		-0.0020	0.0109	

*Method: linear regressions w/ state*month & year fixed effects, splines for temperature, and standard errors clustered by state; Data: NCDC and BRFSS 1993-2000, N = 116,418 in cold states, 130,451 in warm states; ***: p<0.01 (two-tailed t-test); **: p<0.05; *: p<0.10.*

Sensitivity Checks

The basic patterns of results – in which physical activity is significantly and negatively associated with temperature in cold temperature ranges, with this effect being higher among lower SES groups -- is robust to the following sensitivity checks (for which full results are available from authors on request). First, we re-estimate the regressions using only the 24 states below the median in terms of

land area, so as to restrict attention to cases where the state-level weather measures would reflect more precisely each individual's local weather conditions. In this sensitivity check it is especially notable that our estimated effect of precipitation is no larger than in the primary analysis; this suggests that the weak results for precipitation are probably not due to the fact that precipitation is measured with error at the state level because it is variable within states.

Second, we re-estimate the regressions without individual covariates (age, gender, race/ethnicity, marital status, employment status), as these covariates should not be correlated with weather shocks and therefore should not affect the results substantially. Third, we use logistic instead of linear specifications for the binary dependent variables (meeting CDC guidelines for exercise and any exercise participation). Fourth, we redefine the cold temperature range to two alternatives: lower than 40 degrees, or lower than 50 degrees. In these two alternative analyses, the association between temperature and LTPA remains significant and negative in the cold range, and the association also becomes significant and negative in the middle temperature range in the former case (40 degrees as the upper limit of the cold range). Fifth, instead of using a linear spline for temperature, we use a linear and squared term, and we find as expected that the linear term is positive and significant and the squared term is negative significant (implying the bowed relationship shown in Figure 1).

To examine the robustness of our results for outdoor versus indoor activities, we restrict the definitions of outdoor and indoor to the more clear-cut cases (using only activities that are “clearly” indoor or outdoor, as defined in the Appendix). We also run an alternative version of the analysis of the outdoor or indoor activities, in which we conservatively exclude activities that cannot be unequivocally assigned to “mostly outdoor” or “mostly indoor” (badminton, basketball, calisthenics, swimming). In these robustness checks the main pattern of results for outdoor versus indoor activities remains the same as in Tables 6-8.

Finally, we conduct our analysis stratified by gender, and we find that the estimated effects of weather on LTPA are almost identical for males and females.

V. CONCLUSION

This is the first study, to our knowledge, to estimate the effects of environmental factors on exercise behavior using essentially random variation in those conditions. We find evidence for modest effects of temperature on LTPA for all SES groups, with the larger effects generally for people with lower educational attainment or income (though, as noted earlier, this pattern is not consistent across every outcome variable and SES category). In lower temperature ranges, increases in temperature have a positive effect on the probability that people engage in LTPA, or equivalently, decreases in temperature have a negative effect

on LTPA. Roughly, the stronger response to colder temperatures by lower SES groups appears to be due in half to larger reductions in outdoor activity and in half to smaller increases in indoor activity.

The differential responses of LTPA to weather shocks by SES could be due to multiple factors, including differences in access to exercise spaces and equipment, differences in schedule and transportation constraints, and differences in preferences about various activities. Our data do not allow us to examine these factors directly, but the fact that lower SES groups are less likely to shift to indoor activities suggests that lower availability of indoor facilities may be an important factor on the margin.

It is important to note that our results reveal large relative differences in *elasticities* by SES group, but the absolute magnitudes of these elasticities are too small for our results to explain much of the overall differences in *levels* of behavior by SES. For example, as a back-of-the-envelope calculation, consider how much the SES disparity in exercise participation widens during weather that is five degrees colder than usual (a sizeable fluctuation in within state-month weather, as noted earlier). In this case, our estimates from Table 4 indicate that the probability of any exercise would fall by 1.25% among people with a high school degree or less, and by 0.65% among those with a college degree or more. Thus, even a sizeable fluctuation in weather would only increase the difference in exercise participation by 0.6%, which is a small proportion of the overall difference in levels of 22% (83% versus 61%, as shown in Table 2).

These modest immediate responses to weather conditions, however, may be more significant if they have longer-term impacts on behavior for some people. This is possible to the extent that exercise is a habit-forming activity; in this case, a temporary “shock” to one’s behavior may have a lasting impact. Although we cannot address this issue with our data (which do not have multiple observations of individuals over time), previous research indicates that past exercise behavior strongly predicts current exercise behavior, controlling for other factors (see, e.g., Ouellette and Wood, 1998). In future research, randomized studies of interventions to increase physical activity could yield more definitive estimates of the extent to which exercise is habit-forming, by measuring behavior beyond the intervention period.

With these caveats in mind, our results are consistent with the broad idea that environmental factors affect health behaviors, and that such factors also contribute to socioeconomic disparities for these behaviors. The fact that exercise is inversely related to SES is well known; the new finding here is that the behavior of lower SES people is more elastic with respect to weather *on the margin*. This higher elasticity may be specific to weather, reflecting lower availability of indoor substitutes. In this case, interventions and policies that increase options for indoor LTPA, particularly among lower SES groups, are

likely to be effective in increasing overall LTPA. Furthermore, to the extent that the higher elasticity of behavior for lower SES groups reflects a more general sensitivity to external factors, this highlights the promise of interventions that address such factors more broadly. A priority for future research is to investigate which specific aspects of socioeconomic status explain differential responses to environmental conditions.

**Appendix: Participation and outdoor/indoor classifications,
by type of LTPA***

<i>Type of LTPA</i>	<i>Total</i>	<i>Primary activity</i>	<i>Secondary activity</i>	<i>Times per week**</i>	<i>Minutes per time</i>	<i>MET***</i>	<i>Outdoor/Indoor</i>
Walking	37.57%	32.29%	5.28%	3.5	46.2	3.5	Out (mostly)
Gardening	7.32%	4.62%	2.69%	2.7	120.4	5	Out (clearly)
Weightlifting	6.40%	3.32%	3.08%	3.3	61	6	In (clearly)
Running	5.96%	4.64%	1.32%	3.1	42.6	8	Out (mostly)
Other	4.88%	2.60%	2.27%	3.1	88.4		
Bicycling for pleasure	4.81%	2.66%	2.16%	2.8	62.3	8	Out (clearly)
Aerobics class	4.44%	3.17%	1.27%	3	51.5	6.5	In (clearly)
Golf	4.15%	2.52%	1.62%	1.5	205.8	4.5	Out (clearly)
Basketball	2.96%	1.88%	1.08%	2.2	102.6	8	Out (mostly)
Home exercise	2.79%	1.71%	1.07%	3.9	36.9	3	In (clearly)
Swimming laps	2.49%	1.13%	1.37%	2.6	55.5	7	In (mostly)
Calisthenics	1.78%	0.94%	0.84%	3.9	36.3	8	In (mostly)
Jogging	1.74%	1.25%	0.49%	3	39.6	7	Out (mostly)
Health club exercise	1.62%	1.15%	0.48%	3.1	65.5	5.5	In (clearly)
Bicycling machine exercise	1.38%	0.76%	0.62%	3.5	28.5	7	In (clearly)
Softball	1.24%	0.71%	0.53%	2	109.8	5	Out (clearly)
Tennis	1.15%	0.64%	0.52%	2	96.1	7	Out (mostly)
Dancing-aerobics/ballet	0.89%	0.45%	0.45%	2.1	113.5	5	In (clearly)
Bowling	0.79%	0.38%	0.41%	1.5	139.5	3	In (clearly)
Hiking cross country	0.79%	0.48%	0.31%	1.5	157.7	6	Out (clearly)
Volleyball	0.66%	0.34%	0.31%	1.6	108.7	4	In (mostly)
Soccer	0.66%	0.46%	0.20%	1.9	92.5	7	Out (mostly)
Skating - ice or roller	0.60%	0.33%	0.27%	2	86.3	7	In (mostly)
Mowing lawn	0.58%	0.26%	0.33%	1.4	117.3	5.5	Out (clearly)
Stair climbing	0.50%	0.25%	0.25%	3.8	31.1	8	Out (mostly)

Snow skiing	0.45%	0.24%	0.21%	1.7	216	7	Out (clearly)
Racquetball	0.44%	0.26%	0.19%	1.9	79.1	7	In (clearly)
Fishing from riverbank or boat	0.36%	0.16%	0.21%	1.7	258.4	3	Out (clearly)
Horseback riding	0.34%	0.19%	0.16%	2.8	119.5	4	Out (mostly)
Judo/karate	0.34%	0.23%	0.11%	3.2	85.9	10	In (clearly)
Hunting large game - deer, elk	0.29%	0.19%	0.10%	2.5	264.3	6	Out (clearly)
Snow shoveling by hand	0.20%	0.10%	0.10%	1.5	65.1	6	Out (clearly)
Touch football	0.19%	0.10%	0.09%	2	114	8	Out (clearly)
Rowing machine exercise	0.17%	0.08%	0.09%	3.4	29.4	7	In (clearly)
Waterskiing	0.17%	0.08%	0.09%	1.7	100.1	6	Out (clearly)
Carpentry	0.13%	0.07%	0.06%	3.2	246	3	In (mostly)
Raking lawn	0.11%	0.06%	0.05%	1.8	124.5	4	Out (clearly)
Boating	0.11%	0.05%	0.06%	1.9	185.2	3.5	Out (clearly)
Boxing	0.09%	0.05%	0.04%	3.2	79.1	9	In (clearly)
Surfing	0.09%	0.06%	0.03%	2.8	143.9	3	Out (clearly)
Canoeing, rowing in competition	0.08%	0.03%	0.04%	1.6	171.4	12	Out (clearly)
Mountain climbing	0.06%	0.03%	0.03%	1.9	165.9	8	Out (clearly)
Painting/papering house	0.06%	0.03%	0.03%	2.9	264.2	3	In (mostly)
Handball	0.05%	0.03%	0.02%	2	92.9	12	In (clearly)
Scuba diving	0.04%	0.02%	0.02%	1.6	112	7	Out (clearly)
Badminton	0.03%	0.02%	0.02%	2.1	81	4.5	Out (mostly)
Rope skipping	0.03%	0.01%	0.02%	3.7	32.6	10	In (mostly)
Table tennis	0.03%	0.01%	0.01%	2.2	93.1	4	In (clearly)
Backpacking	0.02%	0.01%	0.01%	1.6	212.2	7	Out (clearly)
Snow shoeing	0.02%	0.01%	0.01%	1.4	109.9	8	Out (clearly)
Sledding, tobogganing	0.02%	0.01%	0.01%	1.3	127.3	7	Out (clearly)
Squash	0.02%	0.01%	0.01%	2	68.2	12	In (clearly)
Paddleball	0.01%	0.01%	0.01%	1.9	106.7	6	Out (mostly)
Snorkeling	0.01%	0.00%	0.01%	1.5	95.8	5	Out (clearly)
Snow blowing	0.01%	0.01%	0.00%	1.7	112.6	4.5	Out (clearly)
Stream fishing in waders	0.01%	0.01%	0.00%	2.2	160.3	6	Out (clearly)

*Leisure time physical activity (LTPA) data: BRFSS 1993-2000

**Conditional on participation (i.e. zeros are not averaged in)

***MET = Metabolic equivalent, a measure of the intensity of exercise. 3-6 is considered moderate and 6+ vigorous. These values are from prevention.sph.sc.edu/tools/docs/documents_compendium.pdf

REFERENCES

- Aarts H, Paulussen T, Schaalma H. Physical exercise habit: on the conceptualization and formation of habitual health behaviours. *Health Education Research* 1997; 12: 363-74.
- Arroll B, Beaglehole R. Does physical activity lower blood pressure? A critical review of the clinical trials. *Journal of Clinical Epidemiology* 1992; 45: 439-447.
- Ball K, Salmon J, Giles-Corti B, Crawford D. How can socio-economic differences in physical activity among women be explained? A qualitative study. *Women & Health* 2006; 43: 93-113.
- Berlin JA, Colditz GA. A meta-analysis of physical activity in the prevention of coronary heart disease. *American Journal of Epidemiology* 1990; 132: 612-628.
- Burton NW, Turrell G, Oldenburg B. Participation in recreational physical activity: why do socioeconomic groups differ? *Health Education and Behavior* 2003; 30: 225-44.
- Cawley, J. An economic framework for understanding physical activity and eating behaviors. *American Journal of Preventive Medicine* 2004; 27(3S): 117-125.
- Centers for Disease Control (CDC). Exercise guidelines retrieved from <http://www.cdc.gov/nccdphp/dnpa/physical/recommendations/index.htm> on May 20, 2006.
- Centers for Disease Control (CDC). Prevalence of regular physical activity among adults --- United States, 2001 and 2005. *MMWR Weekly*, November 23, 2007; 56: 1209-1212.
- Cutler, D., Lleras-Muney, A. Education and health: Evaluating theories and evidence. *NBER Working Paper #12352*, 2006.
- Davis TC, Arnold C, Berkel HJ, Nandy I, Jackson RH, Glass J. Knowledge and attitude on screening mammography among low-literate, low-income women. *Cancer* 1996; 78: 1912-20.

- Della Vigna S, Malmendier U. Paying not to go to the gym. *American Economic Review* 2006; 96: 694-719.
- Duncan JJ, Gordon NF, Scott CB. Women walking for health and fitness: how much is enough? *Journal of the American Medical Association* 1991; 266: 3295-3299.
- Gerhardsson M, Steineck G, Hagman U, Rieger Å, Norell SE. Physical activity and colon cancer: a case-referent study in Stockholm. *International Journal of Cancer* 1990; 46: 985-989.
- He, Xiaoxing Z, Baker D. Differences in leisure-time, household, and work-related physical activity by race, ethnicity, and education. *Journal of General Internal Medicine* 2005; 20: 259-265.
- Heien D., Durham C.. A test of the habit formation hypothesis using household data. *The Review of Economics and Statistics* 1991; 73: 189-199.
- Hillsdon M, Panter J, Foster C, Jones A. Equitable access to exercise facilities. *American Journal of Preventive Medicine* 2007; 32: 506-8.
- Humphreys B., Ruseski J. Economic determinants of participation in physical activity and sport. Working Paper No. 06-13, 2006, International Association of Sports Economists.
- Humphreys B., Ruseski J. Participation in physical activity and government spending on parks and recreation. *Contemporary Economic Policy* 2007; 25: 538-552.
- Lee CJ, Lawler GS, Panemangalore M, Street D. Nutritional status of middle-aged and elderly females in Kentucky in two seasons: Part 1. Body weight and related factors. *Journal of the American College of Nutrition* 1987; 6:209-15.
- Matthews CE, Freedson PS, Hebert JR, Stanek EJ 3rd, Merriam PA, Rosal MC, Ebbeling CB, Ockene IS. Seasonal variation in household, occupational, and leisure time physical activity: longitudinal analyses from the seasonal variation of blood cholesterol study. *American Journal of Epidemiology* 2001; 153: 172-83.

- Mensah G, Mokdad A, Ford E, Greenlund K, Croft J . State of disparities in cardiovascular health in the United States. *Circulation* 2005; 111: 1233-1241.
- Ouellette, JA.; Wood, W. Habit and intention in everyday life: The multiple processes by which past behavior predicts future behavior. *Psychological Bulletin* 1998; 124(1): 54-74.
- Philipson, T., Posner, R. The long-run growth in obesity as a function of technological change. *NBER Working Paper #7423*, 1999.
- Powell LM, Slater S, Chaloupka FJ, Harper D. Availability of physical activity-related facilities and neighborhood demographic and socioeconomic characteristics: a national study. *American Journal of Public Health* 2006; 96: 1676-80
- Ruhm, C. Are recessions good for your health? *The Quarterly Journal of Economics* 2000; 617-650.
- Ruhm, C. Healthy living in hard times. *Journal of Health Economics* 2005; 24: 341-363.
- Pivarnik JM, Reeves MJ, Rafferty AP. Seasonal variation in adult leisure-time physical activity. *Medical Science in Sports and Exercise* 2003; 35: 1004-8.
- Srinivasan, Shobha PhD, Liam R. O'Fallon, MA and Allen Dearry, PhD. Reviewing the Evidence: Creating Healthy Communities, Healthy Homes, Healthy People: Initiating a Research Agenda on the Built Environment and Public Health. *American Journal of Public Health* 2003; 93: 1446-1450.
- US Department of Health and Human Services. Physical activity and health: report of the Surgeon General. Atlanta, Georgia: US Department of Health and Human Services, CDC, National Center for Chronic Disease Prevention and Health Promotion, 1996.
- Visscher TL, Seidell JC. Time trends (1993-1997) and seasonal variation in body mass index and waist circumference in the Netherlands. *International Journal of Obesity and Related Metabolic Disorders* 2004; 28: 1309-16.