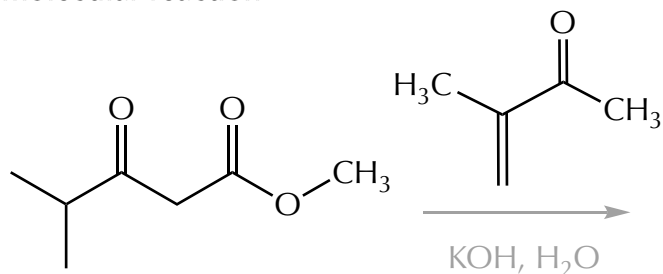
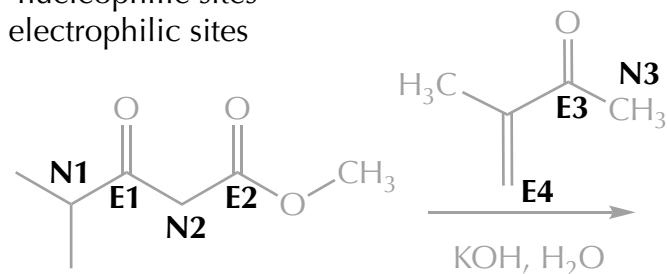


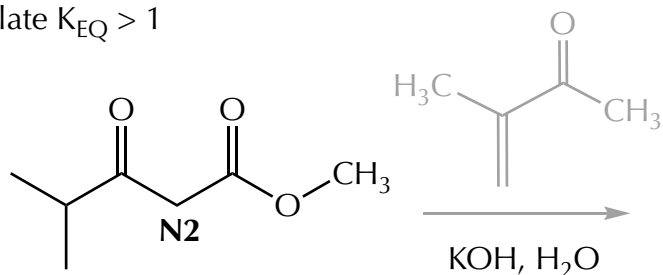
intermolecular reaction



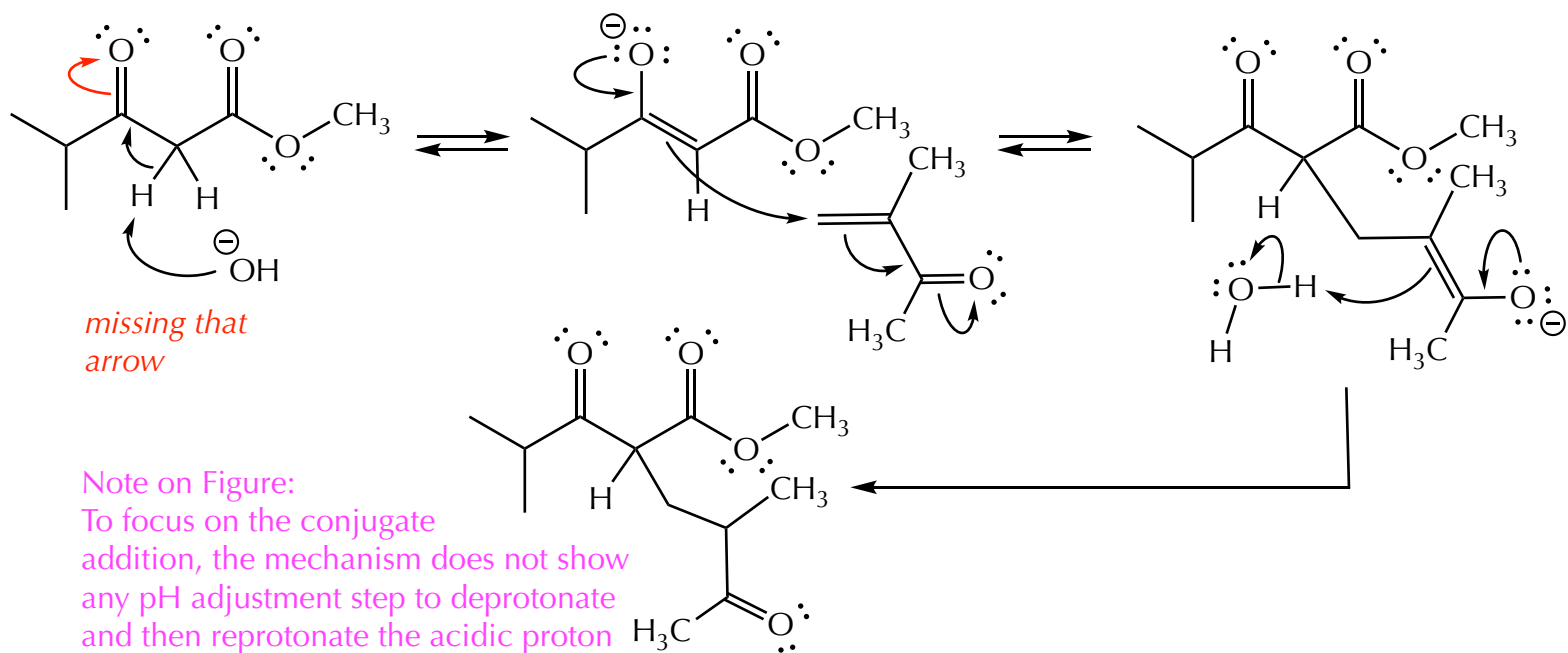
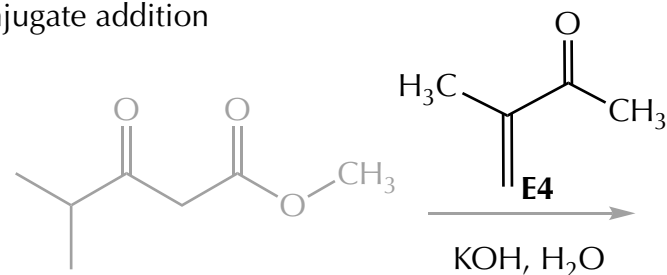
N = nucleophilic sites
E = electrophilic sites



formation of the nucleophile:
 enolate $K_{EQ} > 1$



reaction of the electrophile:
 conjugate addition



missing that
 arrow

Note on Figure:
 To focus on the conjugate addition, the mechanism does not show any pH adjustment step to deprotonate and then re-protonate the acidic proton in the product. Experimentally, a workup would be needed.