

Appendix C – Information from the EnVision Manistee County Fact Book

EnVision Manistee County Fact Book

Manistee County Community Foundation

Spring 2005



Natural Environment & Recreation



Commercial Lodging

- Many of Manistee County's visitors choose to stay in some type of commercial lodging establishment.
- Much like other counties in Northern Lower Michigan, Manistee County sees the majority of its commercial lodging stays in the summer months, with the most significant activity occurring in July and August.

Chart 3: Number of Commercial Lodging Establishments, 2000

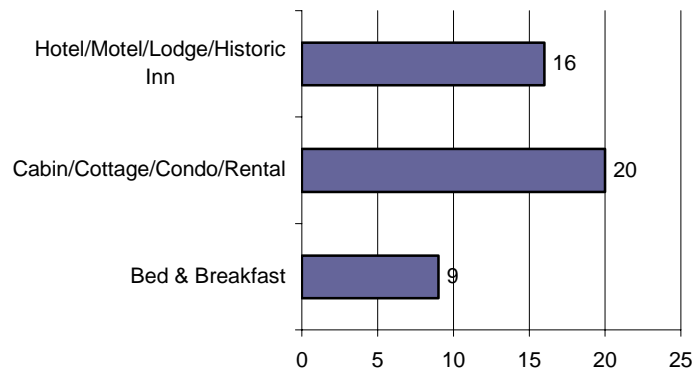
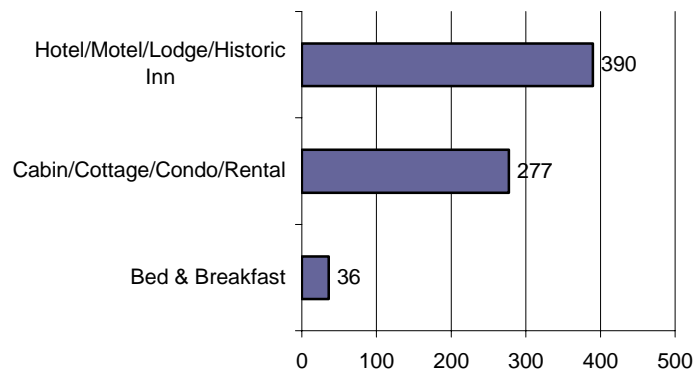


Chart 4: Number of Guest Rooms in Commercial Lodging Establishments, 2000



Source: Michigan State University Extension. Manistee County Tourism Profile. 2001.

Public Parks & Lands

- Varying from roadside parks to national forests, there are a number of public parks and lands in Manistee County, including:

1st Street Beach—Manistee.

Arboretum—Wellston.

Arcadia Beach—Lake Michigan, Arcadia.

Bar Lake Outlet—Bar Lake.

Brethren Village Park—Brethren.

Cooly Bridge—Norman Township.

Copemish Village Park—Copemish.

Crystal Lake Beach—Wellston.

Dickson Township Park—Dickson Township.

Dorner Lake—Wellston.

Douglas Park/First Street Beach—Lake Michigan, Manistee.

Duffy Park—Manistee.

Eastlake Village Park—Eastlake.

Fifth Avenue Beach—Lake Michigan, Manistee.

Hopkins Park—Bear Lake.

Magoon Creek Beach—Lake Michigan, Manistee.

Manistee National Forest

Manistee River State Park

Maple Grove Park—Kaleva.

Orchard Beach State Park—Lake Michigan, Manistee.

Pere Marquette State Forest.

Pierport Beach—Lake Michigan, Onekama.

Portage Point—Lake Michigan, Onekama.

Pleasanton Township Park—Pleasanton.

Campgrounds

- Campers represent a significant share of Michigan’s overall pleasure travel market (10%). Manistee County is ranked 6th in regards to the market share of the most frequently visited counties by campers to Michigan.
- Camping parties are larger (4.3 vs. 3.7 persons), are younger (33.4 vs. 37.7 years old), far more likely to contain children (64.9% vs. 50.7%), and come from households with incomes of less than \$50,000 (59.6% vs. 49%) than non-camper pleasure travelers.
- Campers spend less per trip on average than do non-campers (\$401 vs. \$559); however, when lodging expenditures are factored out, both groups spend the same amount (\$268) per trip on non-lodging purchases.

Chart 5: Number of Campgrounds, 2000

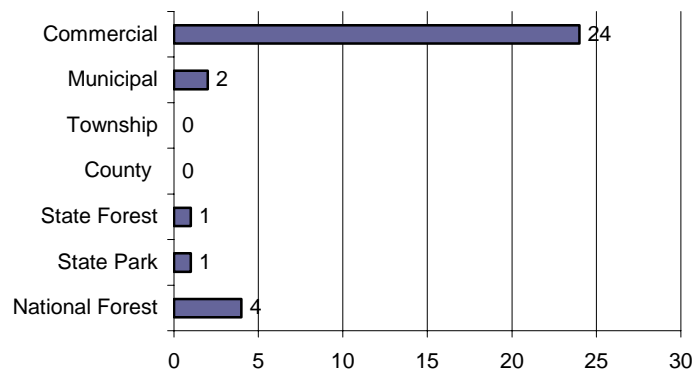
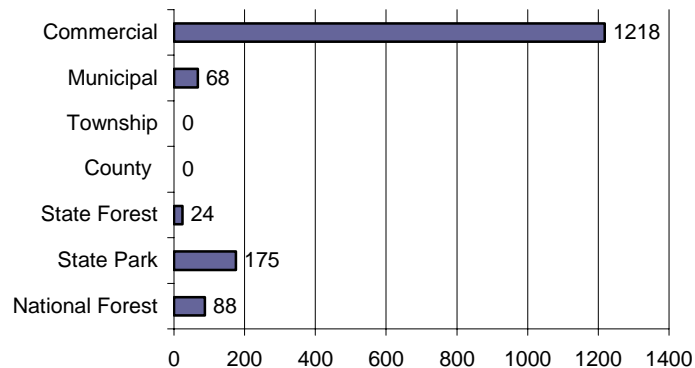


Chart 6: Number of Campsites, 2000

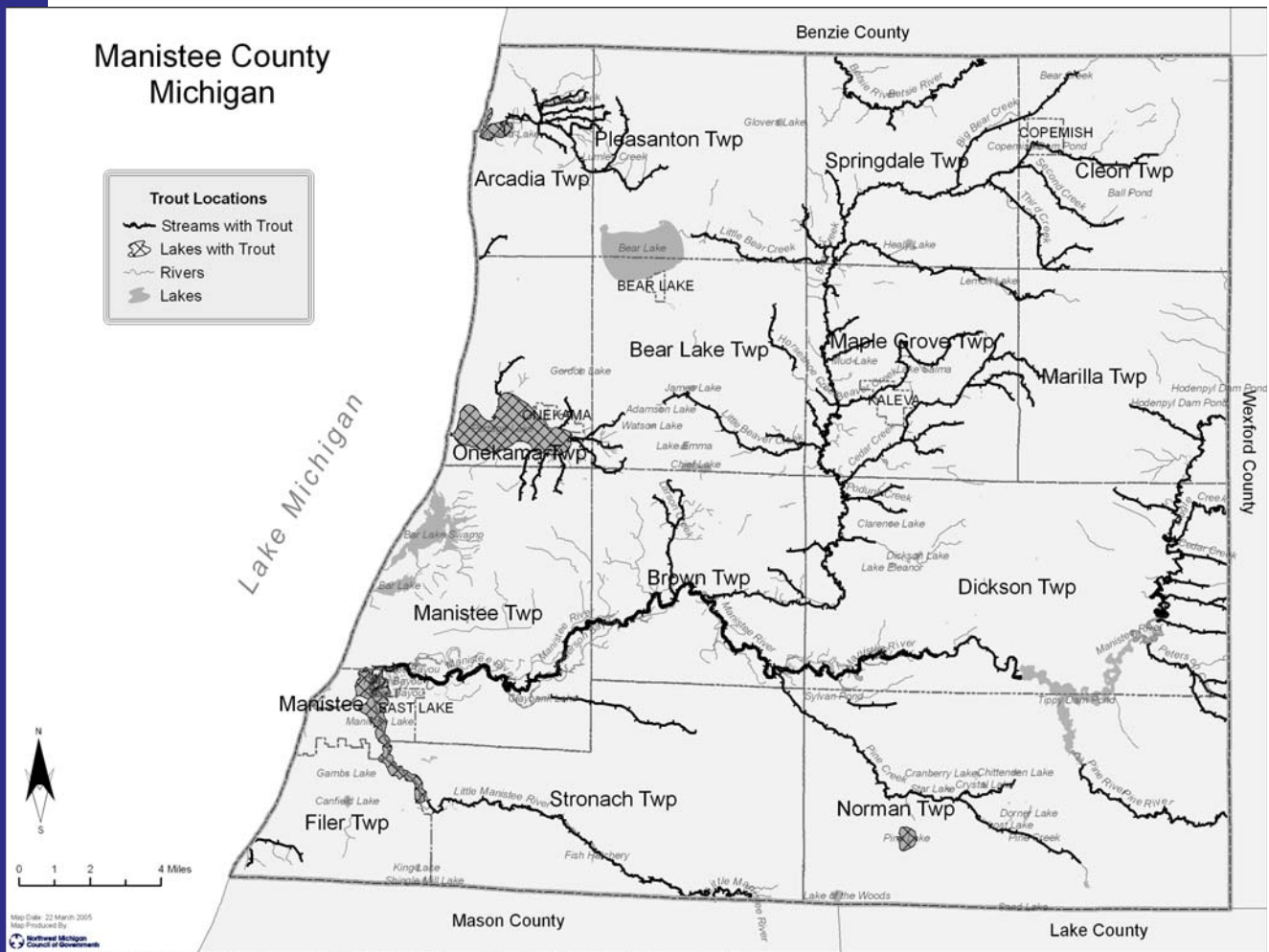


Source: Michigan State University Extension. Manistee County Tourism Profile. 2001.

Fishing & Boating

- Manistee County is known for its abundance of fishing and boating opportunities throughout the County.
- In 2004, it was estimated that 1,352 fishing charters took place resulting in direct expenditures of almost 1 million dollars. Each charter is estimated to \$713.75 per charter.
- More data is needed to fully understand the entire impact sportfishers have on Manistee County.

Map 9: Trout Locations



Fishing & Boating cont.

Selected Inland Lakes

- There are 9 inland lakes in Manistee county with an area greater than 50 acres in size.
- There are 8,248 acres of natural or artificial lakes and ponds in Manistee County. Some of those lakes include:

Arcadia Lake (Deep water port)—Location: M-22 in Arcadia. Fish include: Northern Pike, Largemouth and Smallmouth Bass, Brown Trout in spring and fall, and spring run of Steelhead.

Bar Lake—Location: East side of Lakeshore Drive (M-110). Fish include: Northern Pike, Largemouth and Smallmouth Bass.

Bear Lake—Location: U.S. 31 in Bear Lake. Fish include: panfish, Walleye Pike, Northern Pike, Largemouth and Smallmouth Bass.

Canfield Lake—Location: Maple Road 2.5 miles south of Manistee, access on Canfield Road on left side. Fish include: panfish, Largemouth Bass and Northern Pike.

Crystal Lake—Location: From M-55 in downtown Wellston take Seaman Road south less than 1 mile, lake on west side of Seaman Road (no motor boats are allowed).

Dorner (Long Lake)—Location: From M-55 east of Wellston take S. Snyder Road south 1.5 miles, lake on west side of S. Snyder. Fish include: panfish and Largemouth Bass.

Eleanor Lake—Location: From High Bridge Road in downtown Brethren, travel east on Coates Hwy., lake on left hand side less than .5 miles. Fish include: Largemouth and Smallmouth Bass and panfish (no motorboats allowed).

Healy Lake—Location: From Bear Lake take 13 Mile Road east to Healy Lake Road to Plagany Rd., turn right to next gravel road and follow signs to campgrounds. Fish include: panfish, Largemouth and Smallmouth Bass.

Lemon Lake—Location: From Kaleva take Healy Lake Road three miles north to Potter Road, go east on Potter Road 2 miles to Niemi Rd. Go south on Niemi Road less than .5 mi. to Thompsonville Rd. about 2 miles to Lemon Lake. Fish include: Panfish, Largemouth and Smallmouth Bass.

Manistee Lake (Deep water port)—Location: City of Manistee. Fish include: panfish, Northern Pike, Largemouth and Smallmouth Bass, Walleye Pike, Muskellunge, Salmon in the fall, Steelhead in the fall and spring.

Fishing & Boating cont.

Selected Inland Lakes cont.

Pine Lake—Location: From the west, take M-55 east 17 miles from its junction with U.S. 31 in Manistee, then right at Wellston on Bosschem Rd. for 1.1 miles, then right on Pine Lake Rd. 2.6 miles to the campground. Fish include: panfish, Cisco, Brown Trout and Largemouth Bass.

Portage Lake—Location: Off M-22 in Onekama. Deep water access to Lake Michigan. Fish include: panfish, Perch, Northern Pike, Walleye Pike, Smallmouth and Largemouth Bass, fall run of salmon, Brown Trout and Steelhead in winter and spring.

Round (Chittenden) Lake—Location: From M-55 in Wellston take S. Baker Rd. south less than .5 miles to first dirt road on left - take road less than .5 mi. to Round (Chittenden) Lake. Fish include: Largemouth and Smallmouth Bass, Bluegill and Perch.

Sand Lake—Location: From M-55 in Wellston follow Seaman Rd. 4.5 miles south through Dublin to entrance road, right on Forest Service Rd. 5728 to the campground. Fish include: panfish, Largemouth Bass, Rainbow and Brown Trout. (Only boats that can be hand carried for launching are allowed).

Timmerman Lake—Location: From M-55 west of Wellston travel south on East Udell Hills Rd. 2 miles to a dirt road on east side of road, it then dead ends into the lake. Fish include: panfish, Largemouth and Smallmouth Bass.

Tippy Dam Backwaters—Location: High Bridge Road to downtown Brethren travel east on Coates Hwy. 3.5 miles to Dilling Rd., travel south on Dilling Rd. until it dead ends into Tippy Dam, launch site is on the left. From Wellston go north on M-55 on Snyder Rd. to Robinson Road. Take Robinson Road to its east end. There is another launch at Red Bridge on Coates Hwy. 7.5 miles east of Brethren. Fish include: Northern Pike, Muskellunge, Walleye Pike, Rainbow and Brown Trout, Largemouth and Smallmouth Bass, and panfish.

Fishing & Boating cont.

Selected Rivers

- It is estimated that there are 276 miles of rivers and streams in Manistee County.
- There are 45 miles of state or federal wild/scenic/natural rivers in Manistee County.
- Manistee County is well-known for the “Big” Manistee River, which is most famous for its salmon and steelhead fishing, but its scenery also draws thousands of people there every year, too.
- In Manistee County, the Manistee River begins at Hodenphyl Dam in Marilla Township and exits to Manistee Lake in the City of Manistee. The majority of the Manistee River is surrounded by the Manistee National Forest.
- Other rivers in Manistee County, offering a variety of gamefish and boating opportunities, include:

Betsie River—Location: Thompsonville Rd. (east) to Moore Rd. (west) to Springdale Rd. (south), Springdale Township. The Betsie River Fish include: Salmon, Steelhead, Brown Trout, Rainbow Trout.

Little Manistee River—Location: Campbell Rd. (east) to Stronach Rd. (west), Stronach Township. The Little Manistee is a low-gradient river well-known for its scenery and is wadeable throughout its length. Fish include: Salmon, Steelhead, Brown Trout, Rainbow Trout.

Pine River—Location: County #1 Rd. (east) to M-55 (west), Norman Township. The Pine River is a high-gradient stream dropping an average 10 feet per mile while flowing through Osceola, Lake, Wexford, and Manistee Counties before emptying into the Tippy Dam backwaters of the Manistee River. The Pine River traverses a variety of water conditions, having many sharp bends, short choppy riffles, and passable log and debris jams. The Pine also has a section with class 2 white water rapids. Fish include: Brook, Brown, and Rainbow Trout.

Hiking & Biking

- In 1992, it was estimated that there existed 82 miles of hiking, skiing, and biking trails in Manistee County.
- There are several trail systems in Manistee County that allow a variety of uses, some of these trail systems include:

Arboretum Trail—Bosschem and Pine Lake roads, Wellston.

Big M Cross-Country Ski/Mountain Bike Trails—30 kilometers of trails, 27 miles of single-track mountain bike trails. East Udell Hills Road, 4 miles south of M-55, Manistee National Forest.

Lake Bluff Audubon Center—70 acres of meadows, Lake Michigan beach and arboretum. Hiking only. Manistee.

Manistee River Trail—10 miles, Manistee National Forest.

North Country National Scenic Trail—Manistee River ridge, off M-55 in Udell or in Marilla from Beers Road.

Orchard Beach State Park—2 miles north of Manistee on M-110.

Marzinski Horse Trail—20-mile trail, two trailheads, one campground. Between Wellston and Manistee, Manistee National Forest.



Manistee County Tourism Profile

June 2001

Donald F. Holecek, Teresa Herbowicz, Alex Nikoloff, and Philip J. Alexander

Michigan State University Extension's Tourism Area of Expertise (TAOE) has prepared this profile to help developers, tourism professionals, public officials, and others make informed decisions regarding the travel and tourism industry in Manistee County. All statistics pertain to Manistee County unless otherwise noted and are the most current available at this date. As more recent data become available, they will be posted on the TAOE web site: www.tourism.msu.edu. Further assistance is also available from the Travel, Tourism, and Recreation Resource Center at Michigan State University (517-353-0793) or the MSU Extension office in Manistee County (231-889-4277).

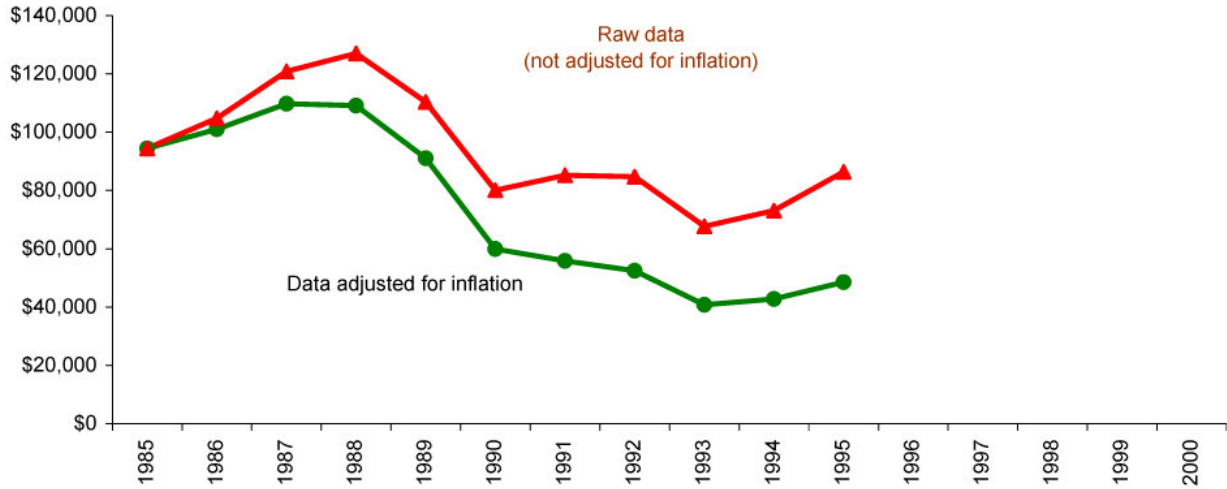


ESTIMATED MARKET SHARE, TRIP VOLUME, AND EXPENDITURES BY TOURISTS IN MANISTEE AND NEIGHBORING COUNTIES, 1996

COUNTY OF MAIN DESTINATION	ESTIMATED MARKET SHARE	ESTIMATED NO. PLEASURE TRIP-NIGHTS	ESTIMATED DIRECT EXPENDITURES
Benzie	0.6%	538,700	\$29,267,000
Grand Traverse	6.1%	5,714,100	\$310,435,000
Lake	0.2%	206,700	\$11,231,000
Manistee	1.5%	1,378,300	\$74,879,000
Mason	1.4%	1,326,900	\$72,088,000
Wexford	0.7%	648,000	\$35,203,000

NOTE: Estimates are based on results from a telephone survey being conducted by the Travel, Tourism, and Recreation Resource Center at Michigan State University. "Pleasure trips" are overnight or day trips to places at least 50 miles from respondents' homes that were made for enjoyment, including vacations, weekend getaways, shopping trips, and trips to visit friends and relatives. The study region consists of Illinois, Indiana, Michigan, Minnesota, Ohio, Wisconsin, and Ontario. "Market share" is the percentage of pleasure trips to Michigan that originated from this region and had a given county as its main destination. Estimated pleasure trip-nights are the product of these percentages and a survey-based estimate of **93.8** million pleasure trip-nights in Michigan in **1996**. Direct expenditures are the product of these percentages and a survey-based estimate of **\$5.1 billion** in direct pleasure trip expenditures in Michigan in **1996**. Estimates do not include pleasure trip-nights or expenditures of travelers who resided outside the study region or who merely passed through a county. Estimates are preliminary and subject to revision as additional data become available. They should be used judiciously since they are in some cases based on small samples for a given county.

TRENDS IN STATE OF MICHIGAN LODGING USE TAX COLLECTIONS FOR MANISTEE COUNTY

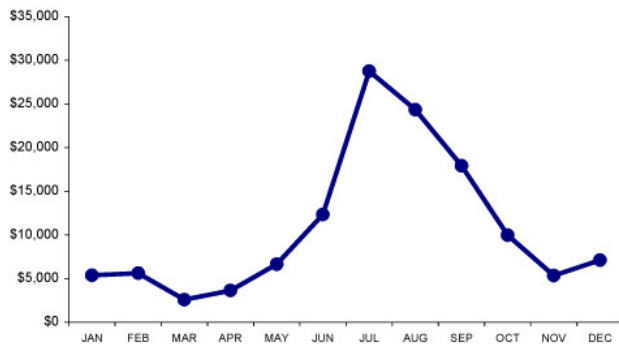


NOTE: The lodging use tax is a state tax on the rental of a guest-room or cabin. To ensure comparability of statistics over the entire 10-year period shown, tax collections after May 1, 1994, when the tax rate increased from 4% to 6%, were adjusted so that they equaled what they would have been at the 4% rate. The comparable statewide average annual change figures are 6.3% in the case of raw data and 0.4% in the case of adjusted data.

SOURCE: Michigan Department of Treasury, Systems Division.

SEASONALITY IN ECONOMIC ACTIVITY

**State of Michigan
Lodging Use Tax Collections for
Manistee County, 1995**



**State of Michigan Sales Tax Collections of
Family Restaurants and Cafeterias for
Manistee County, 1995**



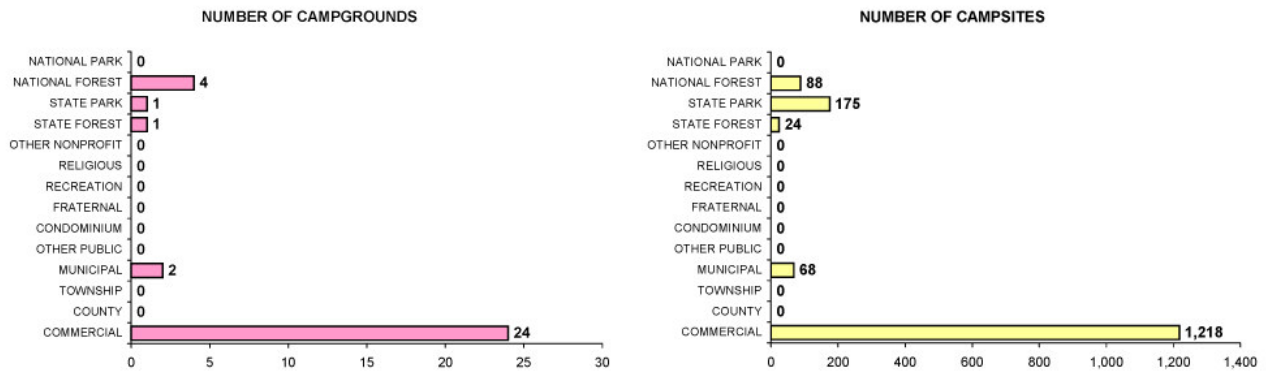
INDICATORS OF TRAVEL ACTIVITY FOR MANISTEE COUNTY

Estimated no. visits to Orchard Beach State Park	1996	83,166
Unadjusted (6%) Michigan Dept. of Treasury lodging use tax collections	1995	\$ 129,587

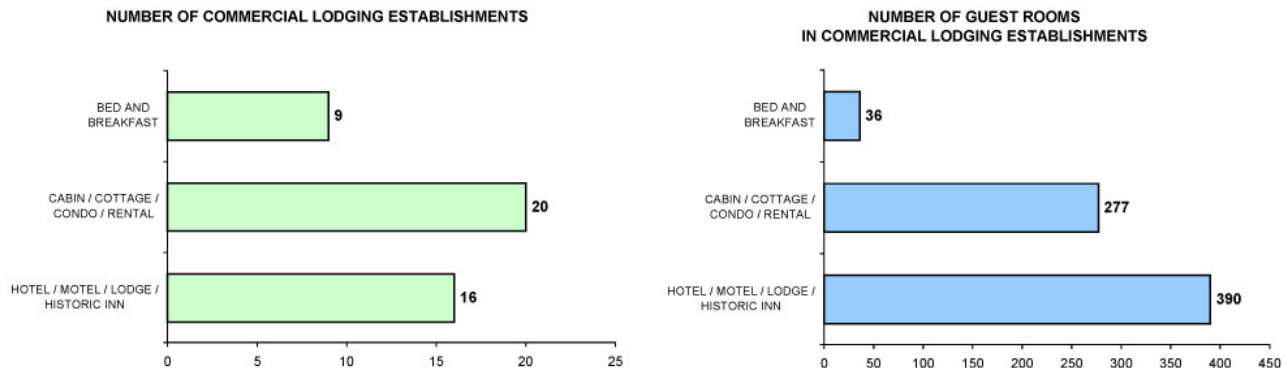
AN INVENTORY OF SELECTED RECREATION AND TOURISM RESOURCES IN MANISTEE COUNTY

NATURAL RESOURCES	YEAR	VALUE
No. land acres in county	1989	347,456
No. water acres in county	1989	9,600
Total no. acres in county	1989	357,056
No. acres of public recreation land	1990	110,762
No. acres of national parks/lake-shores	1990	0
No. acres of national wildlife refuges	1990	0
No. acres of national forests	1990	86,662
No. acres of state parks & recreation areas	1990	201
No. acres of state boating & fishing sites	1990	163
No. acres of state game/wildlife areas	1990	3,634
No. acres of state forests	1990	20,102
No. acres of other areas	1990	0
No. acres of publicly or privately owned forest land	1994	253,300
Total no. acres of designated state or federal wilderness	1990	0
No. natural heritage sites	1990	0
No. miles of Great Lake shoreline	N.A.	25
Total no. acres of legislatively protected sand dunes	1989	588
Total no. miles of rivers and streams	N.A.	276
No. miles of state or federal wild/scenic/natural river	1990	45
No. inland lakes >50 acres in size	N.A.	8,248
Combined acres of natural or artificial lakes and ponds	1991	8,248
Average no. inches of snowfall (1981/82-1990/91).....	100
RECREATION AND TRAVEL FACILITIES		
No. public access sites	1990	23
No. recreational harbors on the Great Lakes	1990	3
No. Great Lake marinas	1994	20
No. Great Lake marina slips	1994	886
No. licensed charter boats	1996	36
No. boat liveries	1990	17
No. watercraft for rent	1990	167
No. lifts or tows at downhill ski areas	1990	0
No. 9-hole golf courses	1995	3
No. 18-hole golf courses	1995	3
No. owned second homes	2000	3,488
No. licensed food service establishments	1995	142
Table service	1995	40
Fast Food	1995	63
Cafeteria	1995	13
Bar only	1995	5
Other	1995	21
Total no. campsites	2000	1,573
Total no. units in commercial lodging establishment	2000	703
No. miles of designated scenic highway	1990	18
No. miles of state-funded snowmobile trail	1990	108
No. miles of hiking/skiing/mtn.biking trail	1994	82
No. of miles of designated off-road vehicle trail	1992	0
Rail trails	N.A.	
No. miles of interstate highway	1990	0
No. museums	N.A.	2
No. historical attractions open to the public	1990	2
No. agricultural markets/wineries/u-picks	1993	27
OTHER		
Population	2000	24,527
Estimated direct pleasure trip expenditures (\$)	1996	74,879,000

CAMPING INVENTORY, 2000



LODGING INVENTORY, 2000



PRINCIPAL ATTRACTIONS AND EVENTS

Surrounded by unspoiled natural beauty year round, Manistee County offers small town charm with recreation for every enthusiast; many attractions are available, including some of the finest fishing in the country, white sandy beaches, a national forest, hunting, campgrounds, horseback riding, skiing, and snowmobile trails, five golf courses, tennis, canoeing, public access sites, riverwalks, bandshells, bowling, historic buildings, Victorian Mansions, trolley tours, museums, and festivals throughout the year; two piers and the U.S. Coast Guard Station protect the entrance to the Manistee River Channel; the much photographed and painted lighthouse and beautiful beach scenes draw many artists to the area; the historic Ramsdell Theatre offers plays by a talented local theatre group.

SOURCES OF STATISTICS IN THIS PUBLICATION

U.S. Bureau of the Census; Michigan Departments of Agriculture, Natural Resources, Public Health, Transportation, and Treasury; National Forest Service; Travel, Tourism, and Recreation Resource Center at Michigan State University (Tourism Resource Center).

RESOURCES FOR FURTHER ASSISTANCE

- Manistee Area Chamber of Commerce: 50 Filer Street, Suite 224, Manistee, MI 49660. 231-723-2575. Fax: 231-723-1515. Web site: <http://www.manistee.com>
- Manistee Area Convention and Visitors Bureau: P.O. Box 13, Manistee, MI 49660. 877-MANISTEE. Fax: 231-723-0603
- West Michigan Tourist Association: 1253 Front Ave. NW, Grand Rapids, MI 49504-3216. 616-456-8557. Fax: 616-456-8958. Web site: <http://www.wmta.org>
- Travel Michigan: P.O. Box 30226, Lansing, MI 48909. 517-373-0670. Web site: <http://www.Michigan.org>
- Travel, Tourism, and Recreation Resource Center, Michigan State University: 172 Natural Resources Building, East Lansing, MI 48824-1222. 517-353-0793. Fax: 517-432-2296. E-mail: dholecek@msu.edu Web site: <http://www.tourismcenter.msu.edu>